

CG | M250

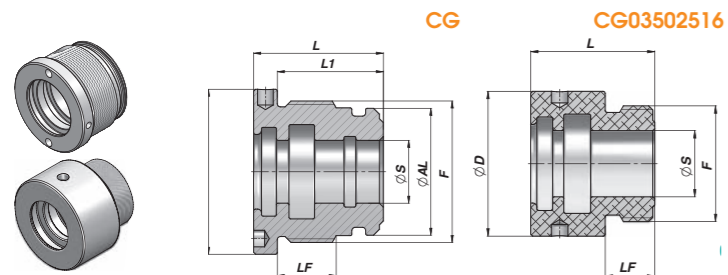


Table of CG head bush specifications including columns for Code Bestell-Nr., dimensions (øAL, øS, øD, F, LF, L, L1), weight (kg), Box Verpackung, Pcs Stk, and Seal kits Dichtsätze.

CG/CG30 | M250

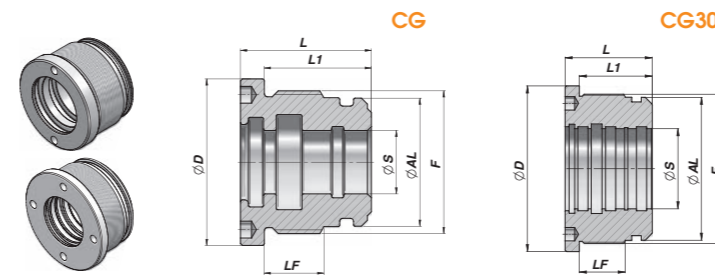


Table of CG/CG30 head bush specifications including columns for Code Bestell-Nr., dimensions (øAL, øS, øD, F, LF, L, L1), weight (kg), Box Verpackung, Pcs Stk, and Seal kits Dichtsätze.

**CG06005035: NOT SUITABLE FOR STANDARD „STL“

SEALS: SEE PAGE 90-91

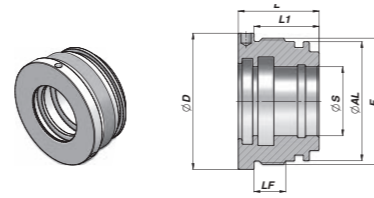
**CG06005035: FÜR STANDARD „STL“ NICHT GEEIGNET

CGMM: NOT SUITABLE FOR STANDARD „STL“

SEALS: SEE PAGE 90-91

MATERIAL: ALLUMINIUM UNI 2001 - 11s | HYDRAULIC CAST IRON - HYDRAULIKGUSS UNI 5007-G25

CGLM | C200

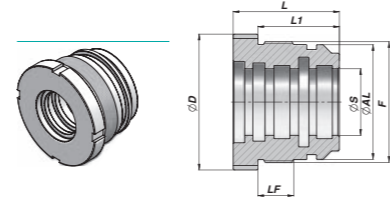


Code Bestell-Nr.	ØAL	ØS	ØD	F	LF	L	L1	kg	Box Verpackung	Pcs Stk	Seal kits Dichtsätze
CGLM049040020	40	20	49	M44x1,5	11	33	26	0,22	Z50CGLM040020	50	GKGCGLM040020
CGLM049040025	40	25	"	"	"	"	"	0,18	Z50CGLM040025	50	GKGCGLM040025
CGLM059050025	50	25	59	M54x1,5	13	36	28	0,38	Z25CGLM050025	25	GKGCGLM050025
CGLM059050030	50	30	"	"	"	"	"	0,31	Z25CGLM050030	25	GKGCGLM050030
CGLM069060030	60	30	69	M64x1,5	16	41	33	0,62	Z25CGLM060030	25	GKGCGLM060030
CGLM069060035	60	35	"	"	"	"	"	0,53	Z25CGLM060035	25	GKGCGLM060035
CGLM079070035	70	35	79	M74x1,5	16	41	33	0,84	Z20CGLM070035	20	GKGCGLM070035
CGLM079070040	70	40	"	"	"	"	"	0,73	Z20CGLM070040	20	GKGCGLM070040
CGLM092080040	80	40	92	M85x2	18	46	36	1,25	Z10CGLM080040	10	GKGCGLM080040
CGLM092080050	80	50	"	M85x2	"	"	"	1,00	Z10CGLM080050	10	GKGCGLM080050
CGLM114100050	100	50	114	M105x2	22	55	45	2,30	Z10CGLM100050	10	GKGCGLM100050
CGLM114100060	100	60	"	M105x2	"	"	"	1,95	Z10CGLM100060	10	GKGCGLM100060

MATERIAL:
HYDRAULIC CAST IRON - HYDRAULIKGUSS UNI 5007 - G25

SEALS: SEE PAGE 92
DICHTUNGEN: SIEHE SEITE 92

CGPM | P350



Code Bestell-Nr.	ØAL	ØS	ØD	F	LF	L	L1	kg	Box Verpackung	Pcs Stk	Seal kits Dichtsätze
CGPM065050025	50	25	64	M54x1,5	22	55	45	0,66	Z25CGPM050025	25	GKGCGLM050025
CGPM065050030	50	30	"	"	"	"	"	0,55	Z25CGPM050030	25	GKGCGLM050035
CGPM065050035	50	35	"	"	"	"	"	0,41	Z25CGPM050035	25	GKGCGLM050035
CGPM075060030	60	30	74	M64x1,5	22	60	48	0,99	Z25CGPM060030	20	GKGCGLM060030
CGPM075060035	60	35	"	"	"	"	"	0,86	Z25CGPM060035	20	GKGCGLM060035
CGPM075060040	60	40	"	"	"	"	"	0,70	Z25CGPM060040	20	GKGCGLM060040
CGPM085070040	70	40	84	M74x1,5	22	65	50	1,27	Z25CGPM070040	5	GKGCGLM070040
CGPM100080045	80	45	94	M85x2	25	75	60	1,95	Z25CGPM080045	5	GKGCGLM080045
CGPM100080050	80	50	"	"	"	"	"	1,70	Z25CGPM080050	5	GKGCGLM080050
CGPM110090045	90	45	109	M95x2	25	75	60	2,80	Z25CGPM090045	5	GKGCGLM090045
CGPM110090050	90	50	"	"	"	"	"	2,57	Z25CGPM090050	5	GKGCGLM090050
CGPM110090060	90	60	"	"	"	"	"	2,00	Z25CGPM090060	5	GKGCGLM090060
CGPM120100045	100	45	119	M105x2	25	75	60	3,80	Z25CGPM100045	5	GKGCGLM100045
CGPM120100050	100	50	"	"	"	"	"	3,45	Z25CGPM100050	5	GKGCGLM100050
CGPM120100060	100	60	"	"	"	"	"	2,90	Z25CGPM100060	5	GKGCGLM100060
CGPM130110050	110	50	129	M115x2	30	85	70	5,00	GKGCGLM110050		
CGPM130110060	110	60	"	"	"	"	"	4,42	GKGCGLM110060		
CGPM140120060	120	60	139	M125x2	30	85	70	5,70	GKGCGLM120060		
CGPM140120070	120	70	"	"	"	"	"	4,90	GKGCGLM120070		
CGPM140120080	120	80	"	"	"	"	"	3,96	GKGCGLM120080		
CGPM145125070	125	70	144	M130x2	39	90	75	5,99	GKGCGLM125070		
CGPM145125080	125	80	"	"	"	"	"	4,95	GKGCGLM125080		
CGPM160140080	140	80	159	M145x2	40	90	75	7,20	GKGCGLM140080		
CGPM160140090	140	90	"	"	"	"	"	6,21	GKGCGLM140090		
CGPM160140100	140	100	"	"	"	"	"	5,00	GKGCGLM140100		
CGPM170150080	150	80	169	M155x2	46	100	85	9,85	GKGCGLM150080		
CGPM170150090	150	90	"	"	"	"	"	8,73	GKGCGLM150090		
CGPM170150100	150	100	"	"	"	"	"	7,49	GKGCGLM150100		
CGPM180160100	160	100	179	M165x2	46	100	85	9,40	GKGCGLM160100		
CGPM180160120	160	120	"	"	"	"	"	6,40	GKGCGLM160120		

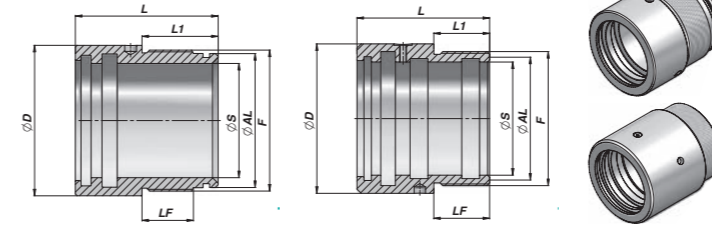
MATERIAL:
STEEL - STAHL: UNI C40

SEALS: SEE PAGE 92
DICHTUNGEN: SIEHE SEITE 92

CGT | M250

TYPE 1

TYPE 2



Code Bestell-Nr.	Type	ØS	ØAL	ØD	F	LF	L	L1	kg	Box Verpackung	Pcs Stk	Seal kits Dichtsätze
CGT0200300	1	20	30	39	M34x1,5	15	57	27	0,29	Z25CGT0200300	25	GKGT020030
CGT0250350	1	40	25	35	M39x1,5	19	65	32	0,33	Z25CGT0250350	25	GKGT025035
CGT0300400	1	30	40	49	M44x1,5	19	65	32	0,38	Z25CGT0300400	25	GKGT030040
CGT0350450	1	35	45	54	M49x1,5	19	65	32	0,44	Z12CGT0350450	12	GKGT035045
CGT0400500	1	40	50	59	M54x1,5	22	70	35	0,51	Z12CGT0400500	12	GKGT040050
CGT0450550	1	45	55	64	M60x1,5	22	70	35	0,59	Z12CGT0450550	12	GKGT045055
CGT0500600	1	50	60	69	M64x1,5	22	75	40	0,64	Z12CGT0500600	12	GKGT050060
CGT0600700	1	60	70	79	M74x1,5	27	75	40	0,75	Z10CGT0600700	10	GKGT060070
CGT0700900	2	70	85	100	M90x2	30	90	30	1,92	Z05CGT0700900	5	GKGT070000
CGT0800960	2	80	90	107	M96x2	40	95	40	1,98	Z05CGT0800960	5	GKGT080000
CGT1001240	2	100	120	138,5	M124x2	42	157	42	7,10	Z05CGT0800960	5	GKGT100000

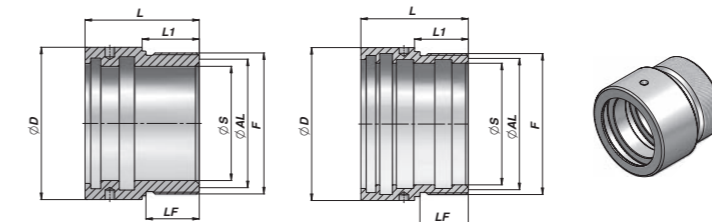
MATERIAL:
TYPE 1: HYDRAULIC CAST IRON - HYDRAULIKGUSS UNI 5007-G25
TYPE 2: STEEL - STAHL: St 52.3 / UNI C40

SEALS: SEE PAGE 93
DICHTUNGEN: SIEHE SEITE 93

CGHFRT | M250

TYPE 1

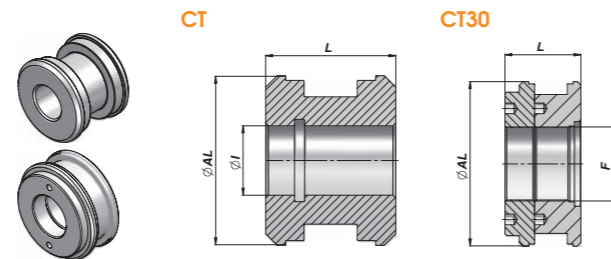
TYPE 2



Code Bestell-Nr.	Type	ØS	ØAL	ØD	F	LF	L	L1	kg	Box Verpackung	Pcs Stk	Seal kits Dichtsätze
CGHFRT0020	1	20	30	40	M34x1,5	18	42	20	0,21	Z25CGHFRT0020	50	GKGFRT020
CGHFRT0025	1	25	30	40	M34x1,5	18	42	20	0,15	Z25CGHFRT0025	50	GKGFRT025
CGHFRT0030	1	30	40	50	M44x1,5	19	46	21	0,33	Z25CGHFRT0030	50	GKGFRT030
CGHFRT0035	1	35	40	50	M44x1,5	19	46	21	0,22	Z25CGHFRT0035	50	GKGFRT035
CGHFRT0040	1	40	50	60	M54x1,5	28	59	30	0,52	Z25CGHFRT0040	25	GKGFRT040
CGHFRT0045	1	45	50	60	M54x1,5	28	59	30	0,37	Z25CGHFRT0045	25	GKGFRT045
CGHFRT0050	1	50	60	70	M64x1,5	28	60	30	0,62	Z25CGHFRT0050	25	GKGFRT050
CGHFRT0060	1	60	70	80	M74x1,5	28	60	30	0,73	Z25CGHFRT0060	25	GKGFRT060
CGHFRT0070	2	70	80	95	M85x2	32	70	35	1,00	Z25CGHFRT0070	5	GKGFRT070
CGHFRT0080	2	80	90	105	M96x2	36	80	40	1,41	Z25CGHFRT0080	5	GKGFRT080
CGHFRT0090	2	90	100	115	M105x2	36	80	40	1,49	Z25CGHFRT0090	5	GKGFRT090
CGHFRT0100	2	100	110	125	M115x2	45	100	50	2,10	Z25CGHFRT0100	3	GKGFRT100

MATERIAL:
TYPE 1: STEEL 9SMn28 WITH „NI-TEMPER“ TREATMENT
STAHL 9SMn28 MIT „NI-TEMPER-BEHANDLUNG“
TYPE 2: STEEL - STAHL: St 52.3 / UNI C40

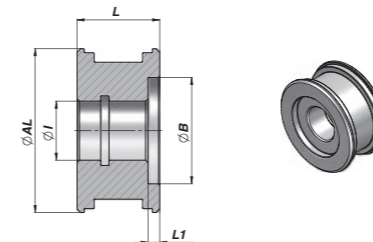
SEALS: SEE PAGE 93
DICHTUNGEN: SIEHE SEITE 93



Code Bestell-Nr.	ØAL	ØI-F	L	kg	Box Verpackung	Pcs Stk	Seal kits Dichtsätze
*CT00030013	30	13	24,7	0,02	Z00CT00030013	100	GKGCT030013
CT00032013	32	13	30	0,10	Z00CT00032013	100	GKGCT032013
CT00032015	32	15	30	0,09	Z00CT00032015	100	GKGCT032015
CT00035015	35	15	40	0,16	Z00CT00035015	50	GKGCT035015
CT00040015	40	15	40	0,23	Z00CT00040015	50	GKGCT040015
CT00045015	45	15	40	0,31	Z00CT00050015	50	GKGCT045015
CT00050015	50	15	40	0,36	Z00CT00050020	50	GKGCT050015
CT00050020	50	20	40	0,31	Z00CT00055020	50	GKGCT050020
CT00055020	55	20	40	0,42	Z00CT00060020	25	GKGCT055020
CT00060020	60	20	50	0,71	Z00CT0006024	25	GKGCT060020
CT00060024	60	24	45	0,56	Z00CT00060027	25	GKGCT060024
CT00060027	60	27	50	0,61	Z00CT00063020	25	GKGCT060027
CT00063020	63	20	50	0,81	Z00CT00063024	25	GKGCT063020
CT00063042	63	24	45	0,65	Z00CT00065020	25	GKGCT063024
CT00065020	65	20	50	0,88	Z00CT00065024	25	GKGCT065020
CT00065024	65	24	45	0,72	Z00CT00070020	25	GKGCT065024
CT00070020	70	20	50	0,94	Z00CT00070024	25	GKGCT070020
CT00070024	70	24	45	0,78	Z00CT00070027	25	GKGCT070024
CT00070027	70	27	50	0,83	Z00CT00075024	20	GKGCT070027
CT00075024	75	24	45	0,95	Z00CT00075024	20	GKGCT075024
CT00075027	75	27	50	1,00	Z00CT00075027	20	GKGCT075027
CT00080024	80	24	45	1,11	Z00CT00080024	20	GKGCT080024
CT00080027	80	27	50	1,23	Z00CT00080027	10	GKGCT080027
CT00085024	85	24	45	1,30	Z00CT00085024	10	GKGCT085024
CT00085027	85	27	50	1,43	Z00CT00085027	10	GKGCT085027
CT00090027	90	27	50	1,66	Z00CT00090027	10	GKGCT090027
CT00090033	90	33	50	1,55	Z00CT00090033	10	GKGCT090033
CT00100027	100	27	50	2,06	Z00CT00100027	10	GKGCT100027
CT00100033	100	33	50	1,95	Z00CT00100033	10	GKGCT100033
CT00110033	110	33	50	2,49			GKGCT110033
CT00110040	110	40	50	2,33			GKGCT110040
CT00120040	120	40	50	2,95			GKGCT120040
CT00125040	125	40	50	3,19			GKGCT125040
CT00140040	140	40	58	5,07			GKGCT140040
CT00150040	150	40	58	5,97			GKGCT150040
CT00160051	160	51	58	6,60			GKGCT160051
**CT11180080	180	M80x2	82	9,80			GKG11180F80
**CT11200080	200	M80x2	82	13,00			GKG11200F80
**CT11250080	250	M98x2	82	21,70			GKG11250F98

MATERIAL:
 STEEL - STAHL 9SMN28
 *ALUMINIUM - ALUMINIUM UNI 2011-115
 **STEEL - STAHL UNI C40

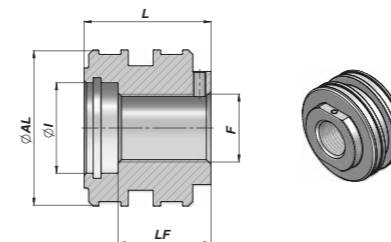
SEALS: SEE PAGE 90-91
 DICHTUNGEN: SIEHE SEITE 93



Code Bestell-Nr.	ØAL	ØI	L	ØB	L1	kg	Box Verpackung	Pcs Stk	Seal kits Dichtsätze
CTLM040015027	40	15	27	27	5	0,15	Z50CTLM040015	50	GKGCTLM040015
CTLM050021030	50	21	30	36	5	0,25	Z50CTLM050021	50	GKGCTLM050021
CTLM060025035	60	25	35	45	5	0,40	Z25CTLM060025	25	GKGCTLM060025
CTLM070025035	70	25	35	45	5	0,59	Z25CTLM070025	25	GKGCTLM070025
CTLM080028040	80	28	40	50	6	0,95	Z20CTLM080028	20	GKGCTLM080028
CTLM100035040	100	35	40	60	6	1,60	Z20CTLM100035	10	GKGCTLM100035

MATERIAL:
 STEEL - STAHL 9SMN28

SEALS: SEE PAGE 93
 DICHTUNGEN: SIEHE SEITE 93

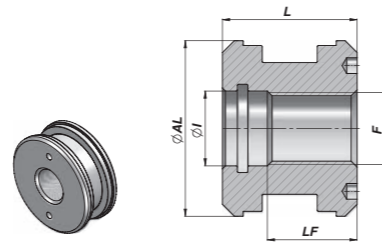


Code Bestell-Nr.	ØAL	F	LF	L	ØI	kg	Box Verpackung	Pcs Stk	Seal kits Dichtsätze
CTPM050021040	50	M20x1,5	28	40	21	0,40	Z50CTPM050021	50	GKGCTPM050021
CTPM060030045	60	M27x2	30	45	30	0,60	Z25CTPM060030	25	GKGCTPM060030
CTPM070040056	70	M30x2	41	56	40	1,00	Z25CTPM070040	25	GKGCTPM070040
CTPM080040056	80	M30x2	41	56	40	1,40	Z10CTPM080040	10	GKGCTPM080040
CTPM090038055	90	M36x2	40	55	38	1,80	Z10CTPM090038	10	GKGCTPM090038
CTPM100045056	100	M42x2	41	56	45	2,20	Z10CTPM100045	10	GKGCTPM100045
CTPM110050070	110	M48x2	55	70	50	3,40			GKGCTPM110050
CTPM120050070	120	M48x2	55	70	50	4,10			GKGCTPM120050
CTPM125050070	125	M48x2	55	70	51	4,40			GKGCTPM125050
CTPM140050075	140	M48x2	57	75	50	6,00			GKGCTPM140050
CTPM150056080	150	M52x2	60	80	56	7,50			GKGCTPM150056
CTPM160056080	160	M52x2	60	80	56	8,50			GKGCTPM160056

MATERIAL:
 STEEL - STAHL UNI C40

SEALS: SEE PAGE 93
 DICHTUNGEN: SIEHE SEITE 93

CTF | M250

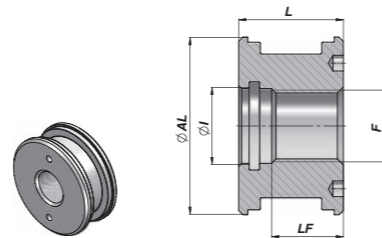


Code Bestell-Nr.	ØAL	F	LF	L	ØI	kg	Box Verpackung	Pcs Stk	Seal kits Dichtsätze
*CTF2510125	25	M10x1,5	17,5	25	11	0,01	Z00CTF2510125	100	GKGF025010
CTF0401615	40	M16x1,5	30	40	17	0,22	Z50CTF0401615	50	GKGF040016
CTF0502015	50	M20x1,5	28	40	21	0,31	Z50CTF0502015	50	GKGF050020
CTF0602420	60	M24x2	30	45	25	0,58	Z25CTF0602420	25	GKGF060024
CTF0632420	63	M24x2	30	45	25	0,66	Z25CTF0632420	25	GKGF063024
CTF0702420	70	M24x2	30	45	25	0,78	Z25CTF0702420	25	GKGF070024
CTF0802720	80	M27x2	30	45	28	1,08	Z20CTF0802720	20	GKGF080027
CTF0903320	90	M33x2	35	50	35	1,57	Z10CTF0903320	10	GKGF090033
CTF1003320	100	M33x2	35	50	35	2,18	Z10CTF1003320	10	GKGF100033
CTF1103930	110	M39x3	35	50	42	2,40			GKGF110039
CTF1204230	120	M42x3	35	50	45	3,00			GKGF120042
CTF1254230	125	M42x3	35	50	45	3,20			GKGF125042
CTF1404830	140	M48x3	40	58	51	4,90			GKGF140048
CTF1504830	150	M48x3	40	58	51	5,80			GKGF150048
CTF1605230	160	M52x3	40	58	54	6,70			GKGF160052

MATERIAL:
STEEL - STAHL 9SMn28

SEALS: SEE PAGE 94
DICHTUNGEN: SIEHE SEITE 94

CTBF | M250

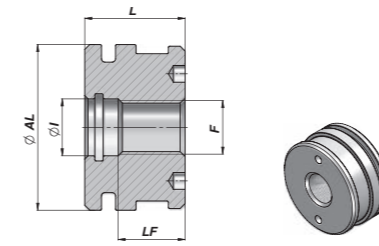


Code Bestell-Nr.	ØAL	F	LF	L	ØI	kg	Box Verpackung	Pcs Stk	Seal kits Dichtsätze
CTBF040M16	40	M16x1,5	19	27	17	0,17	Z00CTBF040M16	100	GKGB040016
CTBF050M20	50	M20x1,5	21	30	21	0,29	Z50CTBF050M20	50	GKGB050020
CTBF060M24	60	M24x2	24	35	25	0,45	Z25CTBF060M24	25	GKGB060024
CTBF063M24	63	M24x2	23	35	25	0,50	Z25CTBF063M24	25	GKGB063024
CTBF070M24	70	M24x2	24	35	25	0,70	Z25CTBF070M24	25	GKGB070024
CTBF080M27	80	M27x2	26	40	28	1,06	Z20CTBF080M27	20	GKGB080027
CTBF100M33	100	M33x2	26	40	35	1,76	Z10CTBF100M33	10	GKGB100033

MATERIAL:
STEEL - STAHL 9SMn28

SEALS: SEE PAGE 94
DICHTUNGEN: SIEHE SEITE 94

CTFG | M250



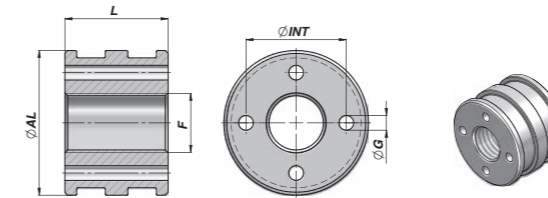
Code Bestell-Nr.	ØAL	F	LF	L	ØI	kg	Box Verpackung	Pcs Stk	Seal kits Dichtsätze
CTFG040016150	40	M16x1,5	20	30	17	0,20	Z00CTFG040016150	100	GKGF040016
CTFG050016150	50	M16x1,5	20	30	17	0,30	Z50CTFG050016150	50	GKGF050016
CTFG060024200	60	M24x2	23	35	25	0,60	Z25CTFG060024200	25	GKGF060024
CTFG070024200	70	M24x2	23	35	25	0,80	Z25CTFG070024200	25	GKGF070024
CTFG080027200	80	M27x2	28	40	28	1,20	Z20CTFG080027200	20	GKGF080027
CTFG100033200	100	M33x2	30	45	35	2,20	Z10CTFG100033200	10	GKGF100033

MATERIAL:
STEEL - STAHL 9SMn28

SEALS: SEE PAGE 94
DICHTUNGEN: SIEHE SEITE 94

FÜHRUNGSKOLBEN FÜR PLUNGERZYLINDER | PISTON FOR PLUNGER CYLINDER

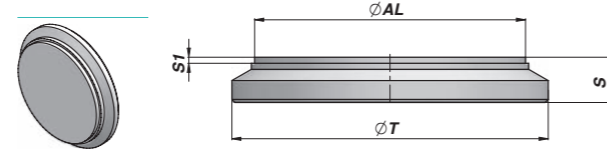
CTT | M250



Code Bestell-Nr.	ØAL	F	L	ØG	ØINT	kg	Box Verpackung	Pcs Stk	Seal kits Dichtsätze
CTT0301215	30	M12x1,5	35	ø 3 x 4	20	0,10	Z50CTT0301215	50	GKGCCT03012
CTT0351415	35	M14x1,5	35	ø 4 x 4	23	0,20	Z50CTT0351415	50	GKGCCT03514
CTT0401415	40	M14x1,5	35	ø 4 x 4	27	0,30	Z50CTT0401415	50	GKGCCT04014
CTT0451615	45	M16x1,5	35	ø 4 x 4	32	0,30	Z50CTT0451615	50	GKGCCT04516
CTT0502015	50	M20x1,5	35	ø 5 x 4	34	0,40	Z50CTT0502015	50	GKGCCT05020
CTT0552015	55	M20x1,5	40	ø 5 x 4	38	0,50	Z25CTT0552015	25	GKGCCT05520
CTT0602015	60	M20x1,5	40	ø 6 x 4	42	0,60	Z25CTT0602015	25	GKGCCT06020
CTT0702420	70	M24x2	45	ø 7 x 4	50	1,00	Z25CTT0702420	25	GKGCCT07024
CTT0802720	80	M27x2	45	ø 7 x 4	60	1,40	Z20CTT0802720	20	GKGCCT08027
CTT0852720	85	M27x2	45	ø 7 x 4	65	1,60	Z10CTT0852720	10	GKGCCT08527
CTT0903320	90	M33x2	50	ø 7 x 6	68	1,90	Z10CTT0903320	10	GKGCCT09033
CTT1003320	100	M33x2	50	ø 8 x 6	76	2,40	Z10CTT1003320	10	GKGCCT10033
CTT1103930	110	M39x2	55	ø 8 x 6	86	3,30			GKGCCT11039
CTT1203930	120	M39x2	55	ø 10 x 6	93	4,00			GKGCCT12039

MATERIAL:
STEEL - STAHL 9SMn28

SEALS: SEE PAGE 94
DICHTUNGEN: SIEHE SEITE 94



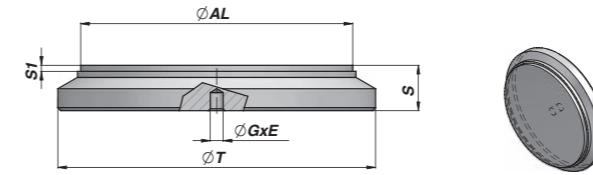
Code Bestell-Nr.	ØAL	ØT	S	S1	kg	Box Verpackung	Pcs Stk
CF00025035	25	35	7	2	0,04	Z0CCF00025035	250
CF00030040	30	40	8	2	0,06	Z0CCF00030040	250
CF00032042	32	42	8	2	0,10	Z0CCF00032042	250
CF00035045	35	45	10	2	0,11	Z0BCF00035045	200
CF00040050	40	50	10	2	0,13	Z0ACF00040050	150
CF00045055	45	55	10	2	0,16	Z00CF00045055	100
CF00050060	50	60	10	2	0,19	Z00CF00050060	100
CF00055065	55	65	12	2	0,28	Z50CF00055065	50
CF00060070	60	70	12	2	0,33	Z50CF00060070	50
CF00063073	63	73	12	2	0,35	Z50CF00063073	50
CF00065075	65	75	12	2	0,38	Z50CF00065075	50
CF00065080	65	80	12	2	0,40	Z50CF00065080	50
CF00070080	70	80	12	2	0,43	Z50CF00070080	50
CF00070085	70	85	12	2	0,45	Z25CF00070085	25
CF00075090	75	90	12	2	0,53	Z25CF00075090	25
CF00080090	80	90	12	2	0,55	Z25CF00080090	25
CF00080095	80	95	12	2	0,58	Z25CF00080095	25
CF00085100	85	100	15	2	0,77	Z25CF00085100	25
CF00090105	90	105	15	2	0,86	Z25CF00090105	25
CF00100115	100	115	15	2	1,05	Z25CF00100115	25
CF00110125	110	125	15	2	1,34		
CF00110130	110	130	15	2	1,40		
CF00120140	120	140	18	2	2,00		
CF00125145	125	145	18	2	2,11		
CF00140160	140	160	18	2	2,67		
CF00150170	150	170	20	2	3,33		
CF00160180	160	180	20	2	3,79		

MATERIAL:
STEEL - STAHL S355J0 (Fe510C) - S355JR (A105)

THESE PLUGS CAN BEND UNDER PEAK PRESSURE. WE RECOMMEND TO WELD ENDS TO ACHIEVE EXTRA RIGIDITY OTHERWISE USE INTERNAL END-PLUGS „CFI“ TYPE.

DIESE ZYLINDERBÖDEN KÖNNEN BEI DRUCKSPITZEN AUSWÖLBN. ZUR VERSTÄRKUNG BEFESTIGUNGEN ANSCHWEISSEN ODER INNENBÖDEN TYP „CFI“ ANWENDEN.

IN CASE OF CONTINUOUS WORK PLEASE USE „CFPM“ END-PLUGS.
BEI BETRIEBSBEDINGUNGEN MIT DAUERNDEN ZYKLUS BÖDEN „CFPM“ ANWENDEN.



Code Bestell-Nr.	ØAL	ØT	S	S1	ØG x E	kg	Box Verpackung	Pcs Stk
CFC0025035	25	35	7	2	ø 3,25 x 3	0,04	Z0CCF0025035	250
CFC0030040	30	40	8	2	ø 4,25 x 5	0,06	Z0CCF0030040	250
CFC0032042	32	42	8	2	ø 4,25 x 5	0,06	Z0CCF0032042	250
CFC0035045	35	45	10	2	ø 4,25 x 5	0,10	Z0BCF0035045	200
CFC0040050	40	50	10	2	ø 4,25 x 5	0,13	Z0ACF0040050	150
CFC0050060	50	60	10	2	ø 4,25 x 5	0,19	Z00CF0050060	100
CFC0060070	60	70	12	2	ø 4,25 x 6	0,33	Z50CF0060070	50
CFC0063073	63	73	12	2	ø 4,25 x 6	0,40	Z50CF0063073	50
CFC0070080	70	80	12	2	ø 4,25 x 6	0,43	Z50CF0070080	50
CFC0080090	80	90	12	2	ø 4,25 x 6	0,55	Z50CF0080090	25
CFC0080095	80	95	12	2	ø 4,25 x 6	0,58	Z50CF0080095	25
CFC0090105	90	105	15	2	ø 4,25 x 6	0,90	Z50CF0090105	25
CFC0100115	100	115	15	2	ø 4,25 x 6	1,05	Z50CF0100115	25

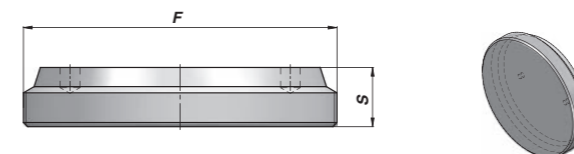
MATERIAL:
STEEL - STAHL S355J0 (Fe510C) - S355JR (A105)

THESE PLUGS CAN BEND UNDER PEAK PRESSURE. WE RECOMMEND TO WELD ENDS TO ACHIEVE EXTRA RIGIDITY OTHERWISE USE INTERNAL END-PLUGS „CFI“ TYPE.

DIESE ZYLINDERBÖDEN KÖNNEN BEI DRUCKSPITZEN AUSWÖLBN. ZUR VERSTÄRKUNG BEFESTIGUNGEN ANSCHWEISSEN ODER INNENBÖDEN TYP „CFI“ ANWENDEN.

IN CASE OF CONTINUOUS WORK PLEASE USE „CFPM“ END-PLUGS.
BEI BETRIEBSBEDINGUNGEN MIT DAUERNDEN ZYKLUS BÖDEN „CFPM“ ANWENDEN.

INNENBODEN MIT GEWINDE | INTERNAL THREADED END-PLUG

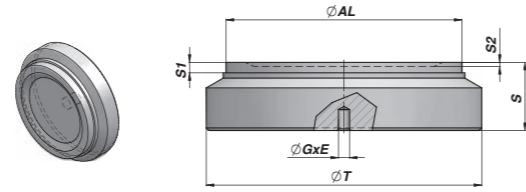


Code Bestell-Nr.	ØAL	F	S	kg
CF00180185	180	M185x2,5	35	6,85
CF00200205	200	M205x2,5	48	11,60
CF00250255	250	M255x2,5	48	18,18

Ø AL = TUBE: BORE - ZYLINDERROHR: INNEN Ø

MATERIAL: STEEL - STAHL UNI C40

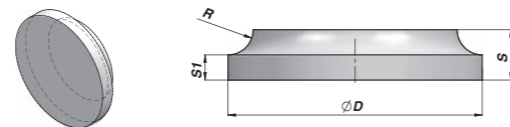
CFPM



Code Bestell-Nr.	ØAL	ØT	S	S1	S2	ØG x E	kg	Box Verpackung	Pcs Stk
CFPM060050017	50	60	17	4	2	ø 4,25 x 8	0,30	Z50CFPM060050	50
CFPM065050017	50	65	17	4	-	ø 4,25 x 8	0,36	Z50CFPM065050	50
CFPM070060019	60	70	19	4	2	ø 4,25 x 8	0,50	Z50CFPM070060	50
CFPM075060019	60	75	19	4	-	ø 4,25 x 8	0,56	Z25CFPM075060	25
CFPM080070022	70	80	22	4	2	ø 4,25 x 8	0,80	Z20CFPM080070	20
CFPM085070022	70	85	22	4	2	ø 4,25 x 8	0,85	Z20CFPM085070	20
CFPM090075022	75	90	22	4	-	ø 4,25 x 8	1,00	Z20CFPM090075	20
CFPM095080025	80	95	25	4	2	ø 4,25 x 8	1,20	Z20CFPM095080	20
CFPM100085025	85	100	25	4	-	ø 4,25 x 8	1,40	Z10CFPM100085	10
CFPM105090026	90	105	26	4	-	ø 4,25 x 8	1,60	Z10CFPM105090	10
CFPM110090026	90	110	26	4	-	ø 4,25 x 8	1,70	Z10CFPM110090	10
CFPM115100030	100	115	30	4	2	ø 6,25 x 12	2,20	Z10CFPM115100	10
CFPM120100030	100	120	30	4	2	ø 6,25 x 12	2,30		
CFPM125110031	110	125	31	7	-	ø 6,25 x 12	2,80		
CFPM130110031	110	130	31	7	-	ø 6,25 x 12	3,00		
CFPM140120034	120	140	34	7	-	ø 6,25 x 12	3,70		
CFPM145125035	125	145	35	7	-	ø 6,25 x 12	4,20		
CFPM160140040	140	160	40	7	-	ø 6,25 x 12	5,90		
CFPM170140040	140	170	40	7	-	ø 6,25 x 12	6,40		
CFPM170150042	150	170	42	7	-	ø 6,25 x 12	7,00		
CFPM180160045	160	180	45	7	-	ø 6,25 x 12	8,50		
CFPM190160045	160	190	45	10	-	ø 6,25 x 12	8,50		

MATERIAL:
STEEL - STAHL S355J0 (Fe510C) - S355JR (A105)

CFI

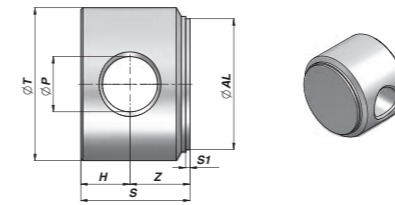


Code Bestell-Nr.	ØAL	ØD	S	S1	R	kg	Box Verpackung	Pcs Stk
CFI0410012	40	41	12	5	7	0,09	Z00CFI0410012	100
CFI0510012	50	51	12	5	7	0,15	Z00CFI0510012	100
CFI0610015	60	61	15	7	8	0,27	Z50CFI0610015	50
CFI0640015	63	64	15	7	8	0,30	Z50CFI0640015	50
CFI0710015	70	71	15	7,5	7,5	0,39	Z50CFI0710015	50
CFI0810017	80	81	17	9	8	0,60	Z25CFI0810017	25
CFI0910017	90	91	17	9	8	0,80	Z25CFI0910017	25
CFI1010020	100	101	20	10	10	1,10	Z20CFI1010020	20

ØAL = TUBE: BORE - ZYLINDERROHR: INNEN Ø
MATERIAL:
STEEL - STAHL S355J0 (Fe510C) - S355JR (A105)

FOR CYLINDER WITH FRONT FLANGE
FÜR ZYLINDER MIT VORDERFLANSCH

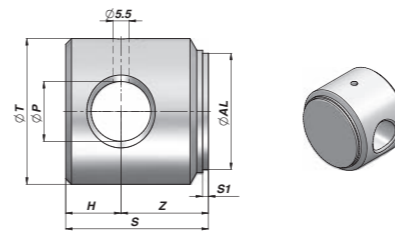
CFO



Code Bestell-Nr.	ØAL	ØT	ØP	Z	H	S	S1	kg	Box Verpackung	Pcs Stk
CF04005016	40	50	16,210	20	15	35	2	0,42	Z50CF04005016	50
CF05006020	50	60	20,25	25	20	45	2	0,80	Z20CF05006020	20
CF06007025	60	70	25,25	27,5	22,5	50	2	1,20	Z20CF06007025	20
CF07008025	70	80	25,25	27,5	22,5	50	2	1,60	Z10CF07008025	10
CF08009530	80	95	30,25	35	25	60	2	2,70	Z05CF08009530	5
CF10011535	100	115	35,25	40	30	70	2	4,70	Z05CF10011535	5

MATERIAL:
STEEL - STAHL S355J0 (Fe510C) - S355JR (A105)

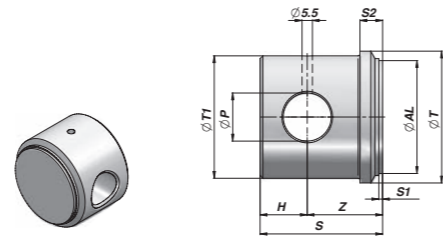
CFHR



Code Bestell-Nr.	ØAL	ØT	ØP	Z	H	S	S1	kg	Box Verpackung	Pcs Stk
CFHR035025	25	5	12,10	18	12	30	2	0,18	Z00CFHR035025	100
CFHR040032	32	40	16,00	23	17	40	2	0,32	Z50CFHR040032	50
CFHR040020040	40	50	20,25	22	18	40	2	0,50	Z25CFHR040020040	25
CFHR050040	40	50	20,50	30	19	49	2	0,60	Z25CFHR050040	25
CFHR050025049	50	60	25,25	27	22	49	2	0,80	Z12CFHR050025049	12
CFHR060050	50	60	25,50	45	25	70	2	1,28	Z12CFHR060050	12
CFHR060025047	60	70	25,25	25	22	47	2	1,10	Z12CFHR060025047	12
CFHR070060	60	70	25,50	27	25	52	2	1,25	Z12CFHR070060	12
CFHR070030063	70	80	30,25	35	28	63	2	2,00	Z10CFHR070030063	10
CFHR080070	70	80	30,50	37	25	62	2	1,94	Z10CFHR080070	10
CFHR080030060	80	90	30,25	32	28	60	2	2,40	Z05CFHR080030060	5
CFHR090080	80	90	30,50	37	25	62	2	2,52	Z05CFHR090080	5
CFHR100030063	100	115	30,25	35	28	63	2	4,40	Z05CFHR1000063	5
CFHR115100	100	115	30,50	36	34	70	2	4,90	Z05CFHR115100	5

MATERIAL:
STEEL - STAHL S355J0 (Fe510C) - S355JR (A105)

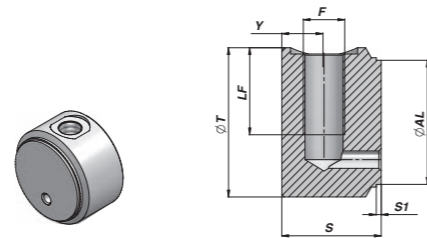
CFHRT



Code Bestell-Nr.	ØAL	ØT	ØP	Z	H	S	S1	ØT1	S2	kg	Box Verpackung	Pcs Stk
CFHRT04030	30	40	14,0	16	14	30	2	-	-	0,23	Z00CFHRT04030	100
CFHRT06050	50	60	23,0	28	22	50	2	-	-	0,90	Z25CFHRT06050	25
CFHRT07060	60	70	25,5	40	25	60	2	65	12	1,48	Z12CFHRT07060	12

MATERIAL:
STEEL - STAHL S355J0 (Fe510C) - S355JR (A105)

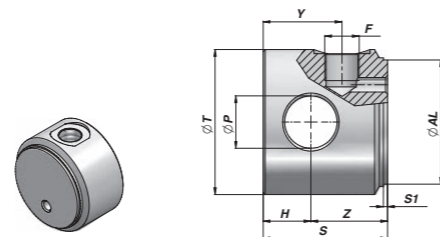
CFVP



Code Bestell-Nr.	ØAL	ØT	F BSP	LF	Y	S	S1	kg	Box Verpackung	Pcs Stk
CFVP04005004	40	50	1/4"	30	17	40	2	0,54	Z20CFVP04005004	20
CFVP05006006	50	60	3/8"	35	17	40	2	0,77	Z25CFVP05006006	25
CFVP06007006	60	70	3/8"	35	17	40	2	1,10	Z20CFVP06007006	20
CFVP06307306	63	73	3/8"	35	17	40	2	1,17	Z10CFVP06307306	10
CFVP07008006	70	80	3/8"	35	17	40	2	1,41	Z10CFVP07008006	10
CFVP08009508	80	95	1/2"	45	20	50	2	2,49	Z10CFVP08009508	10
CFVP10011508	100	115	1/2"	45	20	50	2	3,70	Z05CFVP10011508	5

MATERIAL:
STEEL - STAHL S355J0 (Fe510C) - S355JR (A105)

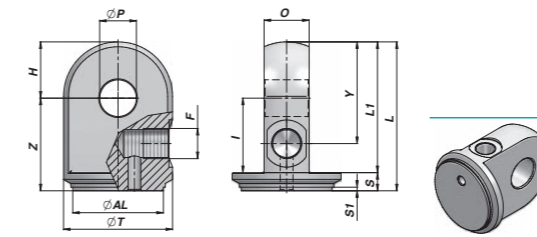
CFE



Code Bestell-Nr.	ØAL	ØT	ØP	Z	H	F BSP	Y	S	S1	kg	Box Verpackung	Pcs Stk
CFE0400504	40	50	16,20	35	15	1/4"	30	50	2	0,60	Z25CFE0400504	25
CFE0500606	50	60	20,25	40	20	3/8"	38	60	2	1,10	Z10CFE0500606	10
CFE0600706	60	70	25,25	37	23	3/8"	38	60	2	1,40	Z10CFE0600706	10
CFE0700806	70	80	25,25	37	23	3/8"	38	60	2	1,95	Z10CFE0700806	10
CFE0800958	80	95	30,25	50	25	1/2"	47	75	2	2,50	Z05CFE0800958	5
CFE1001158	100	115	35,25	45	30	1/2"	47	75	2	4,50	Z05CFE1001158	5

MATERIAL:
STEEL - STAHL S355J0 (Fe510C) - S355JR (A105)

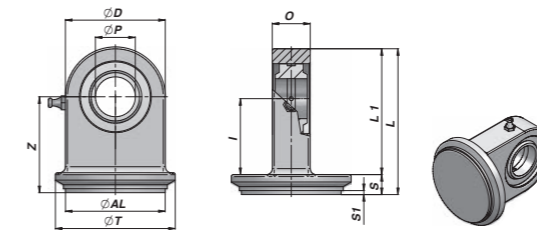
CFB



Code Bestell-Nr.	ØAL	ØT	ØP	Z	H	O	F BSP	Y	I	S	S1	L	L1	kg
CFB0400504	40	50	16,20	46	19	24,8	1/4"	39	36	10	2	65	55	0,55
CFB0500606	50	60	20,25	51	31	24,8	3/8"	56	41	10	2	82	72	0,84
CFB0600706	60	70	25,25	57	33	24,8	3/8"	63	45	12	2	90	78	1,14
CFB0700806	70	80	25,25	65	42	39,5	3/8"	82	53	12	2	107	95	2,24

MATERIAL:
STEEL - STAHL S355J0 (Fe510C) - S355JR (A105)

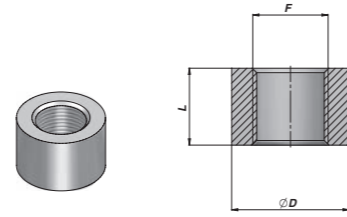
CSTSNF



Code Bestell-Nr.	ØAL	ØT	ØP	Z	ØD	O	I	S	S1	L	L1	kg
CSTSNF020040	40	50	20	48	50	19	38	10	2	73	63	0,48
CSTSNF020045	45	55	20	48	50	19	38	10	2	73	63	0,50
CSTSNF020050	50	60	20	48	50	19	38	10	2	73	63	0,54
CSTSNF025055	55	65	25	57	55	23	45	12	2	84,5	72,5	0,81
CSTSNF025060	60	70	25	57	55	23	45	12	2	84,5	72,5	0,86
CSTSNF025063	63	73	25	57	55	23	45	12	2	84,5	72,5	0,89
CSTSNF030065	65	75	30	63	65	28	51	12	2	95,5	83,5	1,24
CSTSNF030066	65	80	30	63	65	28	51	12	2	95,5	83,5	1,27
CSTSNF030070	70	80	30	63	65	28	51	12	2	95,5	83,5	1,30
CSTSNF030075	75	90	30	63	65	28	51	12	2	95,5	83,5	1,38
CSTSNF030080	80	92	30	63	65	28	51	12	2	95,5	83,5	1,43
CSTSNF030081	80	95	30	63	65	28	51	12	2	95,5	83,5	1,44

MATERIAL:
STEEL - STAHL St 52.3

CBS

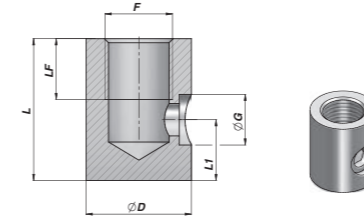


Code Bestell-Nr.	F BSP	L	ØD	kgx100
CBS0300000	1/8"	14	20	2,80
CBS0400000	1/4"	16	22	3,50
CBS0600000	3/8"	17	26	4,70
CBS0800000	1/2"	18	30	6,10
CBS1200000	3/4"	20	38	10,50
CBS1600000	1"	25	45	16,90
CBS2000000	1 1/4"	24,5	55	22,60
CBS2400000	1 1/2"	30	60	28,90
CBS3200000	2"	30	70	30,70

MATERIAL:
STEEL - STAHL 9SMn28

Code Bestell-Nr.	F	L	ØD	kgx100
CBS0001215	M12x1,5	16	22	3,70
CBS0001415014	M14x1,5	14	22	2,80
CBS0001415	M14x1,5	16	22	3,20
CBS0001615	M16x1,5	17	26	4,90
CBS0001815014	M18x1,5	14	28	4,40
CBS0001815	M18x1,5	18	28	5,70
CBS0002015	M20x1,5	18	30	6,10
CBS0002215	M22x1,5	18	30	5,30

CBSLT

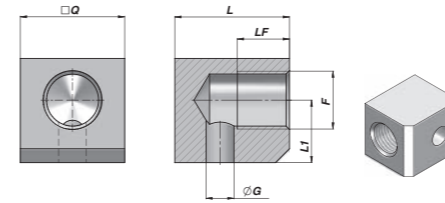


Code Bestell-Nr.	F BSP	LF	L	ØD	ØG	L1	kgx100
CBSLT04010	1/4"	15	30	22	10,5	12	6,90
CBSLT06012	3/8"	15	35	26	12,5	15	10,50
CBSLT08015	1/2"	15	35	30	15,5	12	13,20

MATERIAL:
STEEL - STAHL 9SMn28

ÖLEINTRITTBLOCKCHEN I OIL INLET SUPPORT

CBL

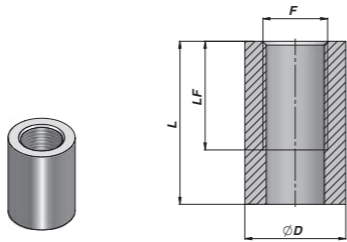


Code Bestell-Nr.	F BSP	LF	L	ØD	ØG	L1	kgx100
CBL0400000	1/4"	15	30	25	8	15	0,10
CBL0600000	3/8"	15	33	30	8	18	0,20
CBL0800000	1/2"	18	40	35	12	20	0,30

MATERIAL:
STEEL - STAHL S355J0 (Fe510C)

HOHES ANSCHLUSSGEWINDE I HIGH THREADED PORT

CBSP

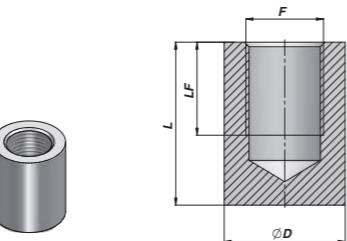


Code Bestell-Nr.	F BSP	L	ØD	kgx100
CBSP040000	1/4"	27	40	8,60
CBSP060000	3/8"	28	42	11,70
CBSP080000	1/2"	33	48	16,60

MATERIAL:
STEEL - STAHL 9SMn28

ANSCHLUSSGEWINDE MIT SACKLOCH I BLIND THREADED PORT

CBSL

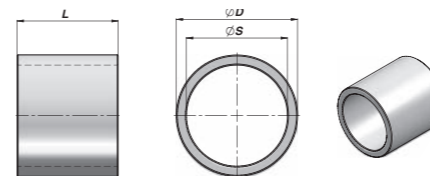


Code Bestell-Nr.	F BSP	L	ØD	kgx100
CBSL040000	1/4"	13	22	7,30
CBSL060000	3/8"	20	26	10,70
CBSL080000	1/2"	22	30	13,80

MATERIAL:
STEEL - STAHL 9SMn28

ABSTANDSTÜCK I SPACER

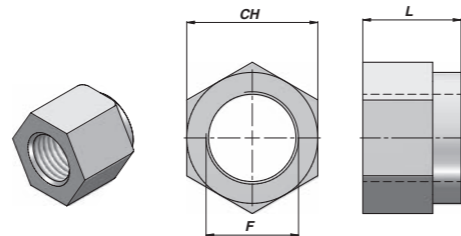
CDIS



Code Bestell-Nr.	ØS	ØD	L	kg	Code Bestell-Nr.	ØS	ØD	L	kg
CDIS025035050	25	35	50	0,20	CDIS025035100	25	35	100	0,40
CDIS030040050	30	40	50	0,21	CDIS030040100	30	40	100	0,42
CDIS035045050	35	45	50	0,25	CDIS035045100	35	45	100	0,50
CDIS040050050	40	50	50	0,28	CDIS040050100	40	50	100	0,56
CDIS050060050	50	60	50	0,34	CDIS050060100	50	60	100	0,68
CDIS060075050	60	75	50	0,62	CDIS060075100	60	75	100	1,24
CDIS0085050	70	85	50	0,72	CDIS070085100	70	85	100	1,44

MATERIAL:
STEEL - STAHL S1 52.3 DIN 2393 ISO H9

CDA/CDB

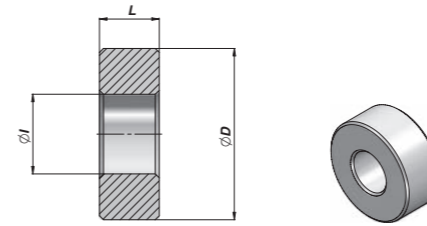


Code Bestell-Nr.	F	L	CH	kgx100	Code Bestell-Nr.	F	L	ØD	kgx100
CDA0001215	M12x1,5	14	19	2,00	CDB000	M14x1,5	14	22	2,60
CDA0001415	M14x1,5	16	22	3,00	CDB000	M20x1,5	17	30	6,00
CDA0001815	M18x1,5	20	27	5,16	CDB000	M24x2	21	36	10,00
CDA0002015	M20x1,5	22	30	7,00	CDB000	M27x2	23	41	13,00
CDA0002215	M22x1,5	25	32	8,60	CDB000	M33x2	26	50	25,50
CDA0002420	M24x2	27	36	13,00					
CDA0002720	M27x2	30	41	18,00					
CDA0003020	M30x2	32	46	25,80					
CDA0003320	M33x2	35	50	31,00					
CDA0003930	M39x3	42	60	56,00					
CDA0004830	M48x3	52	75	200,00					

MATERIAL:
STEEL - STAHL UNI 7473 - 7474



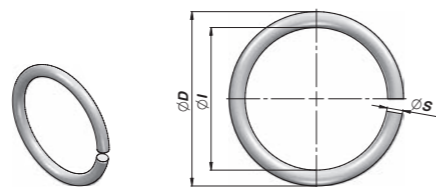
CA



Code Bestell-Nr.	ØD	ØI	L	kg	Box Verpackung	Pcs Stk
CA03400000	34	15	10	0,08	Z0CCA03400000	250
CA03800000	38	20	15	0,10	Z0BCA038000000	200
CA04300000	43	20	15	0,13	Z0ACA04300000	150
CA04800000	48	20	20	0,23	Z00CA04800000	100
CA05300000	53	27	20	0,26	Z00CA05300000	100
CA05800000	58	27	20	0,32	Z50CA05800000	50
CA06800000	68	27	20	0,48	Z50CA06800000	50

MATERIAL:
STEEL - STAHL S355J0 (Fe510C)

CAT



Code Bestell-Nr.	ØD	ØI	ØS	kgx100
CAT0200025	22	16	3	0,38
CAT0250030	28	22	3	0,40
CAT0280030	31	25	3	0,45
CAT0300030	33	27	3	0,50
CAT0350035	38,5	31,5	3,5	0,80
CAT0400040	44	36	4	1,20
CAT0450040	49	41	4	1,40
CAT0500045	54,5	45,5	4,5	1,90
CAT0550050	59,5	50,5	4,5	2,00
CAT0600055	65,5	54,5	5,5	3,40
CAT0700065	76	64	6	5,00
CAT0800060	86	74	6	5,50
CAT1000060	106	94	6	7,00

MATERIAL:
STEEL - STAHL

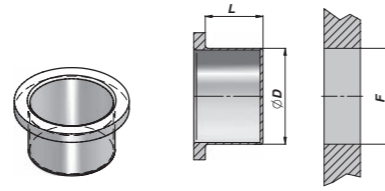
ASEP/ATS



Code Bestell-Nr.	F BSP	S	kgx100	Code Bestell-Nr.	F BSP	S	kgx100
ASEP030000	1/8"	7	1,00	ATS31A0030	1/8"	15	3,00
ASEP040000	1/4"	8	1,20	ATS31A0040	1/4"	20	4,00
ASEP060000	3/8"	9	2,00	ATS31A0060	3/8"	19	4,50
ASEP080000	1/2"	9	2,30	ATS31A0080	1/2"	19	6,00
ASEP120000	3/4"	11	4,00	ATS31A0120	3/4"	23	15,00
ASEP160000	1"	12	6,00	ATS31A0160	1"	30	24,00

MATERIAL:
BRASS+SINTERED BRONZE - MESSING+SINTERBRONZE

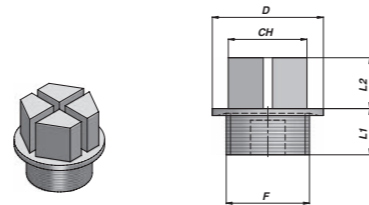
APG/APM



Code Bestell-Nr.	F BSP	ØD	L	Code Bestell-Nr.	F	ØD	L
APG0300000	1/8"	9,0	7,5	APM1215000	M12x1,5	10,5	8,0
APG0400000	1/4"	12,0	9,0	APM1415000	M14x1,5	13,0	9,5
APG0600000	3/8"	15,5	9,5	APM1615000	M16x1,5	15,0	9,5
APG0800000	1/2"	19,0	10,5	APM1815000	M18x1,5	17,0	10,5
APG1200000	3/4"	25,0	12,0	APM2015000	M20x1,5	19,0	10,5
APG1600000	1"	31,0	10,5	APM2215000	M22x1,5	21,0	11,0
APG2000000	1"1/4	39,5	11,0				
APG2400000	1"1/2	46,0	10,5				
APG3200000	2"	57,0	13,5				

MATERIAL:
POLYETHYLENE L.D. - POLYÄTHYLEN L.D.

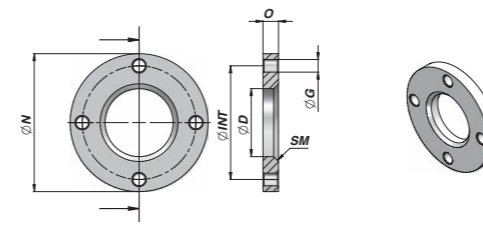
APSEP



Code Bestell-Nr.	F BSP	D	L1	L2	CH	Code Bestell-Nr.	F	D	L1	L2	CH
APSEP43516	1/8"	16,8	9	10	13	APSEP435M12	M12x1,5	17,2	10	10	13
APSEP43519	1/4"	19,2	9	10	13	APSEP435M14	M14x1,5	19,2	10	10	13
APSEP43522	3/8"	22,2	9	11	17	APSEP435M16	M16x1,5	22,0	10	10	17
APSEP43527	1/2"	27,2	12	13	19	APSEP435M18	M18x1,5	24,0	10	11	17
APSEP43532	3/4"	32,3	12	13	24	APSEP435M20	M20x1,5	26,0	10	14	19
APSEP43540	1"	40,0	15	14	27	APSEP435M22	M22x1,5	27,2	10	14	19
APSEP43550	1"1/4	50,4	15	15	36						
APSEP43555	1"1/2	55,4	15	15	41						
APSEP43568	2"	68,4	15	15	55						

MATERIAL:
POLYETHYLENE PA 6 - POLYÄTHYLEN PA 6

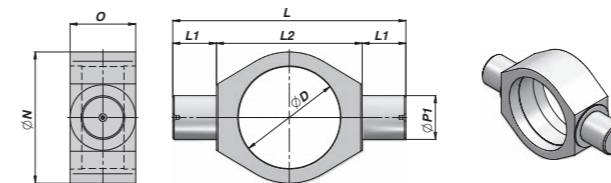
CFL



Code Bestell-Nr.	ØD (+0,2 +0,3)	ØN	O	ØG	ØINT	SM	kg
CFL0050109	50	109	12,5	ø 11 x 4	87	4x45°	0,66
CFL0060128	60	128	14,5	ø 13 x 4	105	4x45°	1,09
CFL0070142	70	142	16,5	ø 13 x 4	117	5x45°	1,50
CFL0080162	80	162	16,5	ø 15 x 4	127	5x45°	1,94
CFL0095181	95	181	18,5	ø 17 x 6	149	7x45°	2,53
CFL0115194	115	194	24,5	ø 17 x 6	162	8x45°	3,47

MATERIAL:
STEEL - STAHL S355J0 (Fe510C)

CPB

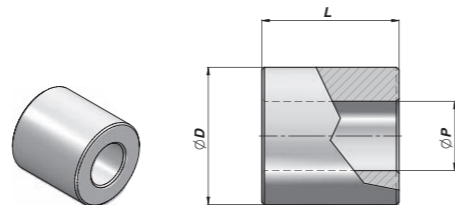


Code Bestell-Nr.	ØD	ØP1 (+0,0 - 0,1)	L1	L	ØN	O	L2	kg
CPB0100000	50	20	20	110	65	30	70	0,52
CPB0200000	60	25	25	130	76	35	80	0,79
CPB0300000	70	30	30	160	90	45	100	1,57
CPB0400000	80	35	35	180	100	50	110	2,03
CPB0500000	92	40	40	195	115	55	115	2,60
CPB0501000	95	40	40	195	115	55	115	2,40
CPB0550000	105	45	45	215	125	60	125	3,00
CPB0600000	115	50	50	245	145	70	145	5,30
CPB0800000	140	60	60	290	170	80	170	7,70

TOLERANCE - TOLERANZ: ØD 50-60-70-80-92-95 = +0,2 +0,3 - ØD 105-115-140 = +0,3 +0,4

MATERIAL:
STEEL - STAHL S355J0 (Fe510C)

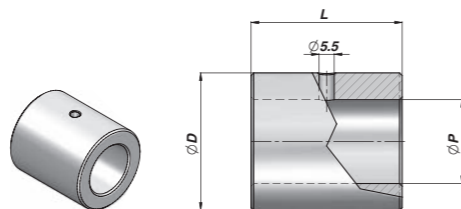
CB



Code Bestell-Nr.	ØP	ØD	L	kg	Box Verpackung	Pcs Stk
CB16035030	16,25	35	30	0,18	Z50CB16035030	50
CB16035060	16,25	35	60	0,36	Z50CB16035060	50
CB20040040	20,25	40	40	0,29	Z50CB20040040	50
CB20040070	20,25	40	70	0,50	Z25CB20040070	25
CB25050050	25,25	50	50	0,56	Z50CB25050050	50
CB25050080	25,25	50	80	0,89	Z20CB25050080	20
CB25050090	25,25	50	90	1,02	Z25CB25050090	25
CB30060060	30,25	60	60	0,97	Z20CB30060060	20
CB30060110	30,25	60	110	1,79	Z10CB30060110	10
CB40070070	40,25	70	70	1,60	Z10CB40070070	10
CB40070130	40,25	70	130	2,65	Z05CB40070130	5

MATERIAL:
STEEL - STAHL S355J0 (Fe510C)

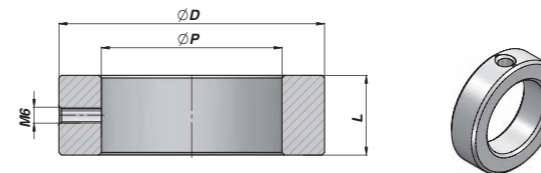
CBF



Code Bestell-Nr.	ØP	ØD	L	kg	Box Verpackung	Pcs Stk
CBF0012025025	12,10	25	25	0,07	Z00CBF0012025025	100
CBF0016030035	16,20	30	35	0,14	Z50CBF0016030035	50
CBF1020035040	20,25	35	40	0,20	Z50CBF1020035040	50
CBF0020040040	20,50	40	40	0,28	Z50CBF0020040040	50
CBF1025040045	25,25	40	45	0,30	Z50CBF1025040045	50
CBF0025050045	25,50	50	45	0,50	Z20CBF0025050045	20
CBF1030050055	30,25	50	55	1,50	Z20CBF1030050055	20
CBF0030050055	30,50	50	55	0,53	Z20CBF0030050055	20
CBF1030060070	30,25	60	70	1,20	Z10CBF1030060070	10
CBF0030065070	30,50	65	70	1,40	Z12CBF0030065070	12

MATERIAL:
STEEL - STAHL S355J0 (Fe510C)

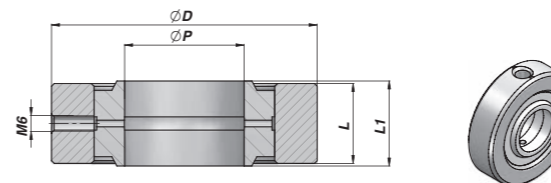
CAGE



Code Bestell-Nr.	For Für	ØD	L	ØP	kg	Box Verpackung	Pcs Stk
CAGE040026	GE ø 15	40	11	26	0,06	Z0BCAGE040026	200
CAGE050035	GE ø 20	50	14	35	0,11	Z0BCAGE050035	200
CAGE069042	GE ø 25	69	19	42	0,35	Z0BCAGE069042	50
CAGE075047	GE ø 30	75	20	47	0,41	Z0BCAGE075047	50
CAGE080055	GE ø 35	80	22	55	0,45	Z0BCAGE080055	25
CAGE094062	GE ø 40	94	26	62	0,79	Z0BCAGE094062	20
CAGE100068	GE ø 45	100	30	68	0,98	Z0BCAGE100068	10

MATERIAL:
STEEL - STAHL S355J0 (Fe510C) - S355JR (A105)

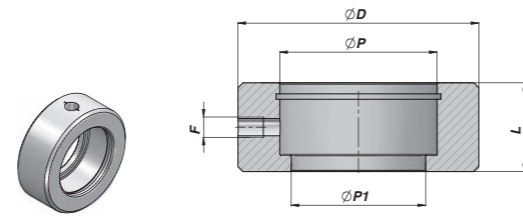
CAGEG



Code Bestell-Nr.	ØP	ØD	L	L1	kg	Box Verpackung	Pcs Stk
CAGEG04002615	15	40	11	12	0,07	Z0BCAGEG04002615	200
CAGEG05003520	20	50	14	16	0,14	Z0BCAGEG05003520	100
CAGEG06904225	25	69	19	20	0,20	Z0BCAGEG06904225	25
CAGEG07504730	30	75	20	22	0,28	Z0BCAGEG07504730	25
CAGEG08005535	35	80	22	25	0,30	Z0BCAGEG08005535	25
CAGEG09406240	40	94	26	28	0,50	Z0BCAGEG09406240	20
CAGEG10006845	45	100	30	32	0,50	Z0BCAGEG10006845	10

MATERIAL:
STEEL - STAHL S355J0 (Fe510C) - S355JR (A105)

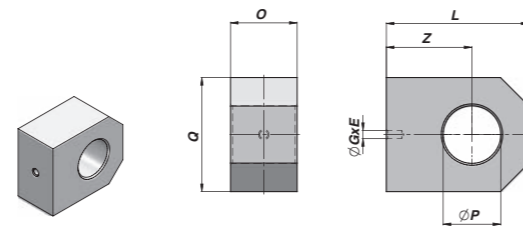
CAGEN



Code Bestell-Nr.	For Für	ØD	L	ØP	ØP1	F	kg	Box Verpackung	Pcs Stk
CAGEN04015015	GE ø 15	40	1A5	26	22	M6	0,09	Z00CAGEN04015	100
CAGEN05019020	GE ø 20	50	19	35	29	M6	0,15	Z00CAGEN05019	100
CAGEN06023025	GE ø 25	60	23	42	35	M6	0,26	Z50CAGEN06023	50
CAGEN07028030	GE ø 30	70	28	47	40	M6	0,47	Z50CAGEN07028	50
CAGEN08530035	GE ø 35	85	30	55	47	M6	0,79	Z20CAGEN08530	20
CAGEN09535040	GE ø 40	95	35	62	53	M8	1,14	Z10CAGEN09535	10
CAGEN11040045	GE ø 45	110	40	68	60	M8	1,87	Z10CAGEN11040	10
CAGEN12040050	GE ø 50	120	40	75	66	M8	2,18	Z05CAGEN12040	5
CAGEN13850060	GE ø 60	138	50	90	80	M8	3,40	Z02CAGEN13850	2

MATERIAL:
STEEL - STAHL S355J0 (Fe510C) - S355JR (A105)

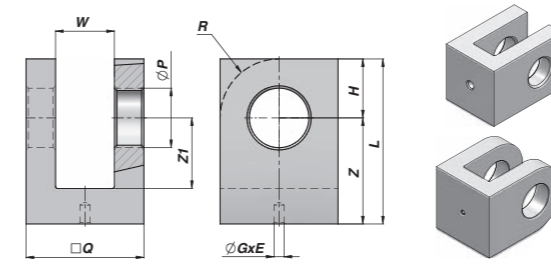
COF



Code Bestell-Nr.	ØP	Q	O	Z	L	ØGxE	kg
COF1600000	16,20	35	20	25	42	Ø 4,25 x 8	0,18
COF2000000	20,25	45	25	30	50	Ø 4,25 x 8	0,35
COF2500000	25,25	50	30	35	60	Ø 4,25 x 8	0,56
COF3000000	30,25	60	35	45	75	Ø 4,25 x 8	0,97
COF3500000	35,25	70	40	55	90	Ø 4,25 x 8	1,60
COF4000000	40,25	70	40	60	95	Ø 4,25 x 10	1,50

MATERIAL:
STEEL - STAHL S355J0 (Fe510C)

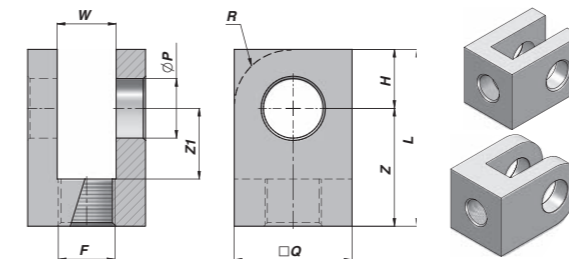
CFS



Code Bestell-Nr.	ØP	□Q	W	Z	Z1	H	L	R	ØGxE	kg
CFS0000016	16,50	35	16	34	24	16	50	-	Ø 4,25 x 6	0,27
CFS0000020	20,25	40	20	40	30	20	60	-	Ø 4,25 x 6	0,38
CFS0000025	25,25	50	25	45	30	25	70	-	Ø 4,25 x 8	0,71
CFS0000030	30,25	60	30	50	35	30	80	30	Ø 4,25 x 8	1,10
CFS0000035	35,25	70	35	55	40	35	90	35	Ø 4,25 x 8	1,60
CFS0000040	40,25	80	40	70	50	40	100	40	Ø 4,25 x 10	2,70

MATERIAL:
STEEL - STAHL S355J0 (Fe510C)

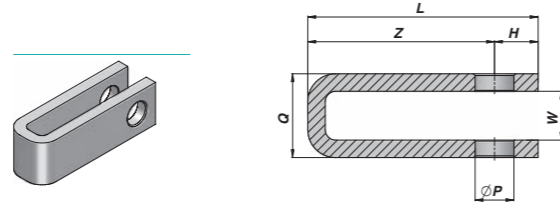
CFF



Code Bestell-Nr.	ØP	□Q	W	Z	Z1	H	L	R	F	kg
CFF0161615	16,20	35	16	39	24	16	55	-	M16 x 1,5	0,30
CFF0202015	20,25	40	20	45	30	20	65	-	M20 x 1,5	0,40
CFF0252420	25,25	50	25	50	30	25	75	-	M24x 2	0,75
CFF0303020	30,25	60	30	65	35	30	95	30	M30x 2	1,46
CFF0353320	35,25	70	35	75	40	35	110	35	M33x 2	1,67
CFF0403320	40,25	80	40	85	50	40	125	40	M33x 2	3,20

MATERIAL:
STEEL - STAHL S355J0 (Fe510C)

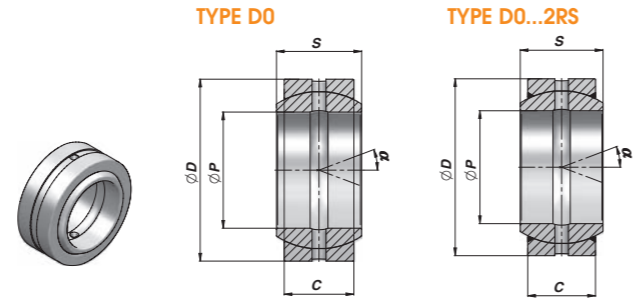
CFP



Code Bestell-Nr.	ØP	Q	W	Z	H	L	Section Schnitt	kg
CFP4010125	20,25	40,5	20,5	105	20	125	40 x 10	0,78
CFP4510067	20,25	43	23	40	27	67	45 x 10	0,49
CFP4510132	22,25	48	28	107	25	132	45 x 10	0,95
CFP5015135	26,25	52	22	110	25	135	50 x 15	1,55
CFP5015140	26,25	63	33	110	30	140	50 x 15	1,68
CFP6020175	26,25	75	35	145	30	175	60 x 20	3,37
CFP6020180	28,25	80	40	150	30	180	60 x 20	3,49

MATERIAL:
STEEL - STAHL S355J0 (Fe510C)

GE D0/GE D02RS



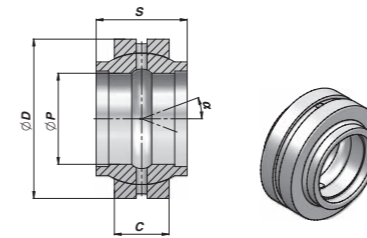
Code Bestell-Nr. Type DO	Code Bestell-Nr. Type DO...2RS	ØP	ØD	S	C	a	FC (kN)	kg
*CGE0120000	-	12	22	10	7	11	10,8	0,01
CGE0150000	CGE0001425	15	26	12	9	8	17	0,02
CGE0160000 (A)	-	16	30	14	10	10	21,2	0,03
CGE0170000	CGE0001426	17	30	14	10	10	21,2	0,04
CGE0200000	CGE0001427	20	35	16	12	9	30	0,06
CGE0250000	CGE0001428	25	42	20	16	7	48	0,11
CGE0300000	CGE0001429	30	47	22	18	6	62	0,14
CGE0350000	CGE0001430	35	55	25	20	6	80	0,22
CGE0400000	CGE0001431	40	62	28	22	7	100	0,30
CGE0450000	CGE0001432	45	68	32	25	7	127	0,40
CGE0500000	CGE0001433	50	75	35	28	6	156	0,54
CGE0600000	CGE0001434	60	90	44	36	6	245	1,00
CGE0700000	CGE0001435	70	105	49	40	6	315	1,50
CGE0800000	CGE0001436	80	120	55	45	6	400	2,20
CGE0900000	CGE0001437	90	130	60	50	5	490	2,70
CGE1000000	CGE0001438	100	150	70	55	7	610	4,30
CGE1100000	CGE0001439	110	160	70	55	6	655	4,70
CGE1200000	CGE0001440	120	180	85	70	6	950	8,00

FC = MAX DYNAMIC LOAD - MAS DYNAMISCHE LAST
* WITHOUT GREASE NIPPLE - NICHT NACHMIERBAR
(A) WITHOUT STANDARD - AUS+...+SER NORM
COUPLING - PAARUNG: STEEL/STEEL - STAHL/STAHL

MATERIAL:
STEEL - STAHL ISO 1240-1 SERIE E

GE L0

TYPE L0



Code Bestell-Nr.	ØP	ØD	S	C	α	FC (kN)	kg
CGE0001447	20	35	20	12	4	30	0,07
CGE0001448	25	42	25	16	4	48	0,12
CGE0001449	32	52	32	18	4	67	0,20
CGE0001450	40	62	40	22	4	100	0,34
CGE0001451	50	75	50	28	4	156	0,56
CGE0001452	63	95	63	36	4	255	1,20

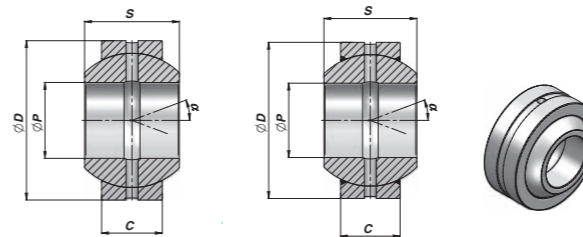
FC = MAX DYNAMIC LOAD - MAS DYNAMISCHE LAST
COUPLING - PAARUNG: STEEL/STEEL - STAHL/STAHL

MATERIAL:
STEEL - STAHL ISO 12240-1 SERIE W

GE F0/GE F02RS

TYPE F0

TYPE F0...2RS

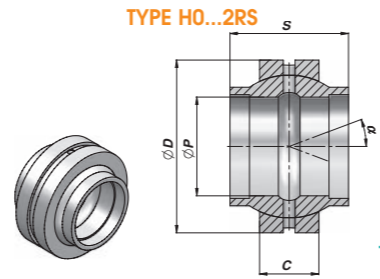


Code Bestell-Nr. Type DO	Code Bestell-Nr. Type DO...2RS	ØP	ØD	S	C	α	FC (kN)	kg
CGE0001477	CGE0001497	20	42	25	16	17	48	0,15
CGE0001478	CGE0001498	25	47	28	18	17	62	0,19
CGE0001479	CGE0001499	30	55	32	20	17	80	0,29
CGE0001480	CGE0001500	35	62	35	22	16	100	0,39
CGE0001481	CGE0001501	40	68	40	25	17	127	0,52
CGE0001482	CGE0001502	45	75	43	28	15	156	0,68
CGE0001483	CGE0001503	50	90	45	36	17	245	1,40
CGE0001484	CGE0001504	60	105	63	40	17	315	2,00
CGE0001485	CGE0001505	70	120	70	45	16	400	2,90
CGE0001486	CGE0001506	80	130	75	50	14	490	3,50

FC = MAX DYNAMIC LOAD - MAS DYNAMISCHE LAST
COUPLING - PAARUNG: STEEL/STEEL - STAHL/STAHL

MATERIAL:
STEEL - STAHL ISO 1240-1 SERIE G

GE H02RS

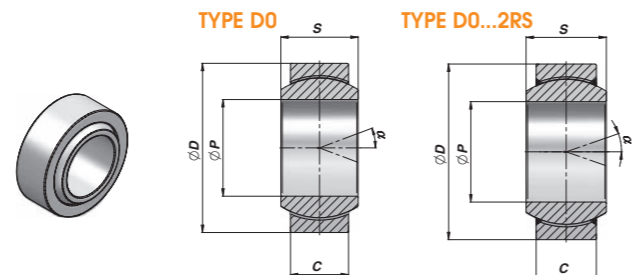


Code Bestell-Nr. Type HO...2RS	ØP	ØD	S	C	α	FC (kN)	kg
CGE0001461	20	35	24	12	3	30	0,05
CGE0001462	25	42	29	16	3	48	0,10
CGE0001463	30	47	30	18	3	62	0,14
CGE0001464	35	55	35	20	3	80	0,24
CGE0001465	40	62	38	22	3	100	0,29
CGE0001466	45	68	40	25	3	127	0,43
CGE0001467	50	75	43	28	3	156	0,54
CGE0001468	60	90	54	36	3	245	1,10
CGE0001469	70	105	65	40	3	315	1,60
CGE0001470	80	120	74	45	3	400	2,40

FC = MAX DYNAMIC LOAD - MAS DYNAMISCHE LAST
COUPLING - PAARUNG: STEEL/STEEL - STAHL/STAHL

MATERIAL:
STEEL - STAHL

GE UK/GE UK2RS

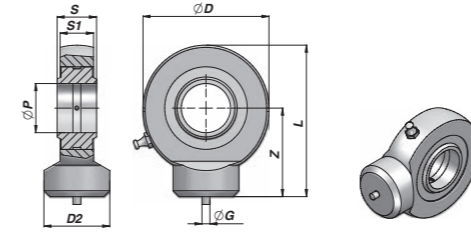


Code Bestell-Nr. Type UK	Code Bestell-Nr. Type UK...2RS	ØP	ØD	S	C	α	FC (kN)	kg
CGE0001521	CGE0001526	20	35	16	12	9	31,5 - 68	0,06
CGE0001522	CGE0001527	25	42	20	16	7	51 - 130	0,11
CGE0001523	CGE0001528	30	47	22	18	6	65,5 - 170	0,14
CGE0170000	CGE0001529	35	55	25	20	6	220	0,22
CGE0200000	CGE0001530	40	62	28	22	7	280	0,30
CGE0250000	CGE0001531	45	68	32	25	7	360	0,40
CGE0300000	CGE0001532	50	75	35	28	6	440	0,54
CGE0350000	CGE0001533	60	90	44	36	6	690	1,00
CGE0400000	CGE0001534	70	105	49	40	6	880	1,50
CGE0450000	CGE0001535	80	120	55	45	6	1135	2,20
CGE0500000	CGE0001536	90	130	60	50	5	1375	2,70
CGE0600000	CGE0001537	100	150	70	55	7	1725	4,30
CGE0700000	CGE0001538	110	160	70	55	6	1860	4,70
CGE0800000	CGE0001539	120	180	85	70	6	2700	8,00

FC = MAX DYNAMIC LOAD - MAS DYNAMISCHE LAST
COUPLING - PAARUNG: HARTCHROM/PTFE - CHROM/PTFE

MATERIAL:
STEEL - STAHL ISO 12240-1 SERIE E

CSTS...C

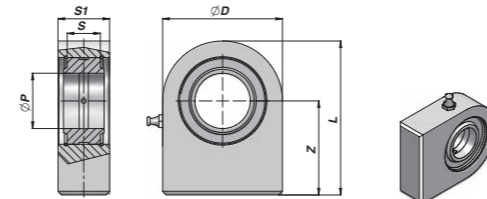


Code Bestell-Nr.	ØP	Z	S	ØD	S1	L	ØD2	ØG	FC (kN)	kg
*CSTS010C00	10	24	9	29	7	38,5	15	3	8,15	0,04
*CSTS012C00	12	27	10	34	8	44	17,5	3	10,8	0,06
**CSTS015C00	15	31	12	40	10	51	21	4	17	0,12
CSTS016C00 (A)	16	35	14	46	11	58	24	4	19	0,17
**CSTS017C00	17	35	14	46	11	58	24	4	21,2	0,18
CSTS020C00	20	38	16	53	13	64,5	27,5	4	30	0,26
CSTS025C00	25	45	20	64	17	77	33,5	4	48	0,45
CSTS030C00	30	51	22	73	19	87,5	40	4	62	0,67
CSTS035C00	35	61	25	82	21	102	47	4	80	1,02
CSTS040C00	40	69	28	92	23	115	52	4	100	1,40
CSTS045C00	45	77	32	102	27	128	58	6	127	1,93
CSTS050C00	50	88	35	112	30	144	62	6	156	2,69
CSTS060C00	60	100	44	135	38	167,5	70	6	245	4,60
CSTS070C00	70	115	49	160	42	195	80	6	315	7,00
CSTS080C00	80	141	55	180	47	231	95	6	400	11,00

FC = MAX DYNAMIC LOAD - MAS DYNAMISCHE LAST
*WITHOUT GREASE NIPPLE - NICHT NACHSCHMIERBAR I ** LUBRICATING HOLE IN THE HEAD - DURCH BOHRUNG NACHSCHMIERBAR
(A) = WITHOUT STANDARD - AUSSER NORM

MATERIAL: STEEL - STAHL ISO 12240-4 SERIE E - TIPO S

CSTS...N

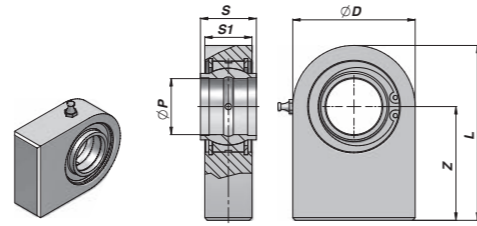


Code Bestell-Nr. Type UK	ØP	Z	S	ØD	S1	L	FC (kN)	kg
CSTS015N00	15	31	12	45	16	53,5	17	0,22
CSTS016N00	16	35	14	48	17,5	59	21,2	0,29
CSTS017N00	17	35	14	48	17,5	59	21,2	0,29
CSTS020N00	20	38	16	50	19	63	30	0,36
CSTS025N00	25	45	20	55	23	72,5	48	0,53
CSTS030N00	30	51	22	65	28	83,5	62	0,85
CSTS035N00	35	61	25	83	30	102,5	80	1,50
CSTS040N00	40	69	28	100	35	119	100	2,42
CSTS045N00	45	77	32	110	40	132	127	3,39
CSTS050N00	50	88	35	123	40	149,5	156	4,24
CSTS060N00	60	100	44	140	50	170	245	7,10
CSTS070N00	70	115	49	164	55	197	315	10,70
CSTS080N00	80	141	55	180	60	231	400	15,10
CSTS090N00 (1)	90	150	60	226	65	263	490	23,40
CSTS100N00 (1)	100	170	70	250	70	295	610	33,10
CSTS110N00 (1)	110	185	70	295	80	332,5	655	48,50
CSTS120N00 (1)	120	210	85	360	90	390	950	79,50

FC = MAX DYNAMIC LOAD - MAS DYNAMISCHE LAST
** LUBRICATING HOLE IN THE HEAD - DURCH BOHRUNG NACHSCHMIEREN
(1) = PROFILE PLATE - PANTOGRAPHIERT

MATERIAL: STEEL - STAHL ISO 12240-1 SERIE E

CSTSCE...N

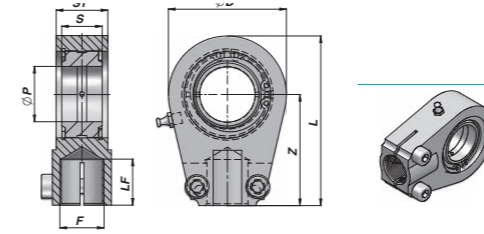


Code Bestell-Nr.	ØP	Z	S	ØD	S1	L	FC (kN)	kg
CSTSCE720N	20	38	20	50	19	63	30	0,36
CSTSCE725N	25	45	25	55	23	72,5	48	0,54
CSTSCE732N	32	65	32	70	27	103	62,5	1,12
CSTSCE740N	40	69	40	100	35	119	100	2,50
CSTSCE750N	50	88	50	123	40	149,5	156	4,60
CSTSCE763N	63	107	63	145	50	178	248	9,30
CSTSCE770N	70	115	70	164	55	197	315	11,25
CSTSCE780N	80	141	80	180	60	231	400	15,75
CSTSCE790N (1)	90	150	90	226	65	263	490	24,00
CSTSCE795N (1)	100	170	100	250	70	295	610	33,95
CSTSCE796N (1)	110	185	110	295	80	332,5	655	49,00
CSTSCE797N (1)	125	210	125	360	90	390	950	81,00

FC = MAX DYNAMIC LOAD - MAS DYNAMISCHE LAST
(1) = PROFILE PLATE - PANTOGRAPHIERT

MATERIAL:
STEEL - STAHL ISO 12240-1 SERIE W

CSTAPR...U

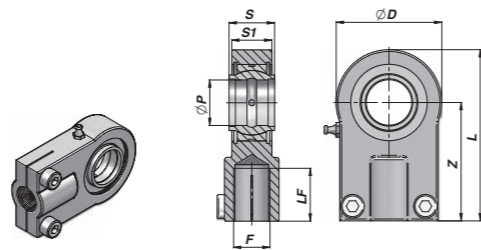


Code Bestell-Nr.	ØP	Z	S	ØD	S1	L	F	LF	FC (kN)	kg
CSTAPR020U	20	50	16	56	19	80	M16x1,5	17	30	0,44
CSTAPR025U	25	50	20	56	23	80	M16x1,5	17	48	0,47
CSTAPR030U	30	60	22	64	28	94	M22x1,5	23	62	0,77
CSTAPR035U	35	70	25	78	30	112	M28x1,5	29	80	1,24
CSTAPR040U	40	85	28	94	35	135	M35x1,5	36	100	2,12
CSTAPR050U	50	105	35	116	40	168	M45x1,5	46	156	3,74
CSTAPR060U	60	130	44	130	50	200	M58x1,5	59	245	6,74
CSTAPR070U	70	150	49	154	55	232	M65x1,5	66	315	9,88
CSTAPR080U	80	170	55	176	60	265	M80x2	81	400	14,20
CSTAPR090U	90	210	60	206	65	322	M100x2	101	490	20,00
CSTAPR100U	100	235	70	231	70	360	M110x2	111	610	27,50
CSTAPR110U	110	265	70	266	80	407,5	M120x3	125	655	45,60
CSTAPR120U	120	310	85	340	90	490	M130x3	135	950	72,00

FC = MAX DYNAMIC LOAD - MAS DYNAMISCHE LAST

MATERIAL: STEEL - STAHL ISO 12240-4 SERIE E (**) = NODULAR CAST IRON - SPHÄROGUSS

CSTAPR...CE

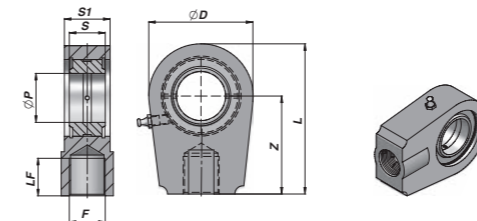


Code Bestell-Nr.	ØP	Z	S	ØD	S1	L	F	LF	FC (kN)	kg
CSTAPR612C	12	38	12	32	11	54	M12x1,25	17	10,8	0,11
CSTAPR616C	16	44	16	40	13	64	M14x1,5	19	17,6	0,20
CSTAPR620C	20	52	20	47	17	77	M16x1,5	23	30	0,35
CSTAPR625C	25	65	25	58	22	96	M20x1,5	29	48	0,62
CSTAPR632C	32	80	32	71	28	118	M27x2	37	67	1,15
CSTAPR640C	40	97	40	90	33	146	M33x2	46	100	2,18
CSTAPR650C	50	120	50	109	41	179	M42x2	57	156	3,96
CSTAPR663C	63	140	63	136	53	213	M48x2	64	255	6,80
CSTAPR670C (**)(A)	70	160	70	155	5	245	M56x2	76	315	9,60
CSTAPR680C (**)	80	180	80	170	67	270	M64x2	86	400	13,00
CSTAPR690C (**)(A)	90	195	90	185	72	296	M72x2	91	490	19,10
CSTAPR695C (**)	100	210	100	211	85	322	M80x2	96	610	25,00
CSTAPR696C (**)(A)	110	235	110	235	88	364	M90x2	106	655	32,00
CSTAPR697C (**)	125	260	125	265	103	406,5	M100x2	113	950	46,00

FC = MAX DYNAMIC LOAD - MAS DYNAMISCHE LAST
* WITHOUT GREASE NIPPLE - NICHT NACHSCHMIERBAR
(A) = WITHOUT STANDARD - AUSSER NORM

MATERIAL:
STEEL - STAHL ISO 12240-4 SERIE E (**) = NODULAR CAST IRON - SPHÄROGUSS

CSTAPR...N

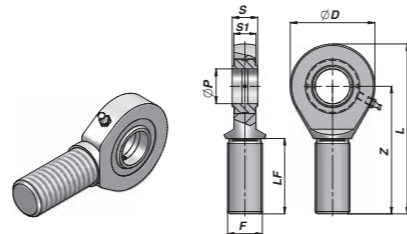


Code Bestell-Nr.	ØP	Z	S	ØD	S1	L	F	LF	FC (kN)	kg
CSTAPR020U	20	50	16	56	19	80	M16x1,5	17	30	0,45
CSTAPR025U	25	50	20	56	23	80	M16x1,5	17	48	0,49
CSTAPR030U	30	60	22	64	28	94	M22x1,5	23	62	0,76
CSTAPR035U	35	70	25	78	30	112	M28x1,5	29	80	1,76
CSTAPR040U	40	85	28	94	35	135	M35x1,5	36	100	2,15
CSTAPR050U	50	105	35	116	40	168	M45x1,5	46	156	3,80
CSTAPR060U	60	130	44	130	50	200	M58x1,5	59	245	6,20
CSTAPR070U	70	150	49	154	55	232	M65x1,5	66	315	9,83
CSTAPR080U	80	170	55	176	60	265	M80x2	81	400	13,97
CSTAPR090U	90	210	60	206	65	322	M100x2	101	490	23,50
CSTAPR100U	100	235	70	231	70	360	M110x2	111	610	32,00
CSTAPR110U	110	265	70	266	80	407,5	M120x3	125	655	41,00
CSTAPR120U	120	310	85	340	90	490	M130x3	135	950	72,00

FC = MAX DYNAMIC LOAD - MAS DYNAMISCHE LAST

MATERIAL:
STEEL - STAHL ISO 12240-4 SERIE E (**) = NODULAR CAST IRON - SPHÄROGUSS

CSTFE...D0

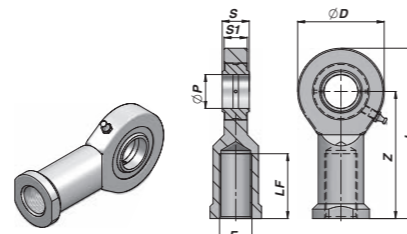


Code Bestell-Nr. Type DO	Code Bestell-Nr. Type DO...2RS	ØP	Z	S	ØD	S1	L	F	LF	FC (kN)	kg
*CSTFE906D0		6	36	6	21	4,3	46,5	M6x1	18	3,4	0,01
*CSTFE908D0		8	42	8	24	6	54	M8x1,25	22	5,5	0,03
*CSTFE910D0		10	48	9	29	7	62,5	M10x1,5	27	8,1	0,05
*CSTFE912D0		12	54	10	34	8	71	M12x1,75	30	10,8	0,08
**CSTFE915D0		15	63	12	40	10	83	M14x2	34	17	0,14
**CSTFE917D0	**CSTFE917D2	17	69	14	46	11	92	M16x2	36	21,2	0,19
**CSTFE920D0	**CSTFE920D2	20	78	16	53	13	104,5	M20x1,5	43	30	0,31
CSTFE925D0	CSTFE925D2	25	94	20	64	17	126	M24x2	53	48	0,56
CSTFE930D0	CSTFE930D2	30	110	22	73	19	146,5	M30x2	65	62	0,89
CSTFE935D0	CSTFE935D2	35	140	25	82	21	181	M36x3	82	80	1,40
CSTFE940D0	CSTFE940D2	40	150	28	92	23	196	M39x3	86	100	1,80
CSTFE945D0	CSTFE945D2	45	163	32	102	27	218	M42x3	94	127	2,60
CSTFE950D0	CSTFE950D2	50	185	35	112	30	241	M45x3	106	156	3,40
CSTFE960D0	CSTFE960D2	60	210	44	135	38	277,5	M52x3	115	245	5,90
CSTFE970D0	CSTFE970D2	70	235	49	160	42	315	M56x4	125	315	8,20
CSTFE980D0	CSTFE980D2	80	270	55	180	47	360	M64x4	140	400	13,10

FC = MAX DYNAMIC LOAD - MAS DYNAMISCHE LAST
 * WITHOUT GREASE NIPPLE - NICHT NACHSMIERBAR
 ** LUBRICATING HOLE IN THE HEAD - DURCH BOHRUNG NACHSCHMIERBAR

MATERIAL:
 STEEL - STAHL ISO 1240-1 SERIE E - TIPO M

CSTFE...D0

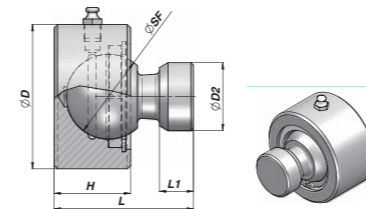


Code Bestell-Nr. Type DO	Code Bestell-Nr. Type DO...2RS	ØP	Z	S	ØD	S1	L	F	LF	FC (kN)	kg
*CSTFI806D0		6	30	6	21	4,3	40,5	M6x1	11	3,6	0,02
*CSTFI808D0		8	36	8	24	6	48	M8x1,25	15	5,8	0,04
*CSTFI810D0		10	43	9	29	7	57,5	M10x1,5	20	8,6	0,06
*CSTFI812D0		12	50	10	34	8	67	M12x1,75	24	11,4	0,08
**CSTFI815D0		15	61	12	40	10	81	M14x2	30	17,6	0,18
**CSTFI817D0	**CSTFI817D2	17	67	14	46	11	90	M16x2	34	22,4	0,22
**CSTFI820D0	**CSTFI820D2	20	77	16	53	13	103,5	M20x1,5	40	31,5	0,35
CSTFI825D0	CSTFI825D2	25	94	20	64	17	126	M24x2	48	51	0,64
CSTFI830D0	CSTFI830D2	30	110	22	73	19	146,5	M30x2	56	66,5	0,93
	CSTFI835D2	35	125	25	82	21	166	M36x3	60	112	1,30
	CSTFI840D2	40	142	28	92	23	188	M39x3	67	140	2,01
	CSTFI845D2	45	145	32	102	27	196	M42x3	65	180	2,50
	CSTFI850D2	50	160	35	112	30	216	M45x3	69	220	3,50
	CSTFI860D2	60	175	44	135	38	242	M52x3	73	345	5,50
	CSTFI870D2	70	200	49	160	42	280	M56x4	80	440	8,60
	CSTFI880D2	80	230	55	180	47	320	M64x4	85	570	12,00

FC = MAX DYNAMIC LOAD - MAS DYNAMISCHE LAST
 * WITHOUT GREASE NIPPLE - NICHT NACHSMIERBAR
 ** LUBRICATING HOLE IN THE HEAD - DURCH BOHRUNG NACHSCHMIERBAR

MATERIAL:
 STEEL - STAHL ISO 1240-1 SERIE E - TIPO F

CSB



Code Bestell-Nr.	ØSF	ØD2	ØD	L	H	L1	FC (kN)	kg
CSB0500000	50	40	85	82	45	20	68,6	2,20
CSB0600000	60	50	98	100	50	25	107,8	3,40
CSB0700000	70	60	105	115	60	30	132,3	4,80

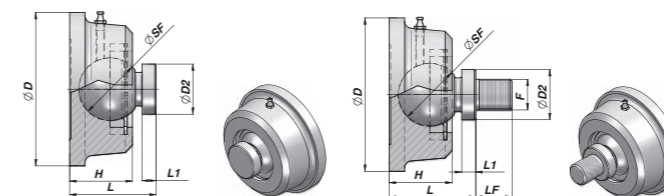
FC = MAX DYNAMIC LOAD - MAS DYNAMISCHE LAST

MATERIAL:
 STEEL - STAHL UNI C40

CSB00

TYPE A

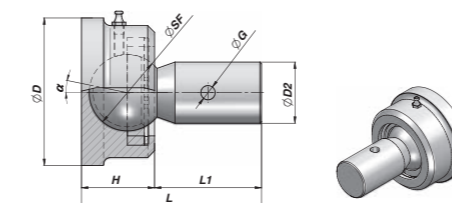
TYPE B



Code Bestell-Nr.	Type	ØSF	ØD2	ØD	L	H	L1	F	LF	FC (kN)	kg
CSB0001980	A	45	30	110	62	45	9			107,8	2,20
CSB0001982	A	55	45	95	78	55	8			147	2,88
CSB0001984	A	65	64	107	88	58	9			225,5	3,96
CSB0001986	B	45	30	110	61	45		M22x1,5	26	107,8	2,42
CSB0001988	B	55	45	95	78	55		M32x2	35	147	3,10

FC = MAX DYNAMIC LOAD - MAS DYNAMISCHE LAST

MATERIAL:
 STEEL - STAHL UNI C40

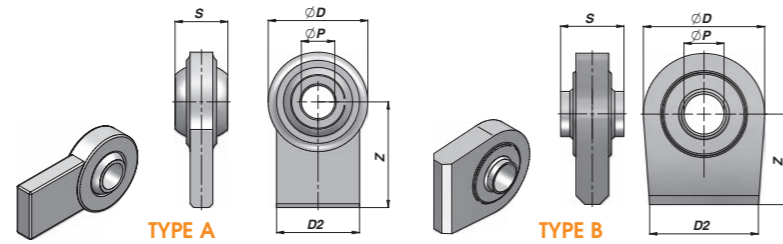


Code Bestell-Nr.	ØSF	ØD2	ØD	L	H	L1	ØG	α	FC (kN)	kg
CSB0001700 (*)	45	36	88	106	43	64		25	78,4	2,18
CSB0001701 (*)	45	36	88	106	43	58,5	8,4		78,4	2,40
CSB0001702 (*)	55	36	92	118,5	53,5	62	8,4		137,2	3,10

FC = MAX DYNAMIC LOAD - MAS DYNAMISCHE LAST
 (*) = GREASE NIPPLE IS TILTED OF ABOUT 6° TO FACILITATE GREASING
 (*) = DER SCHMIERNIPPLE IST UM CA. 6° GENEIGT, UM DIE SCHMIERUNG ZU ERLEICHTERN

MATERIAL: STEEL - STAHL UNI C40

CSR

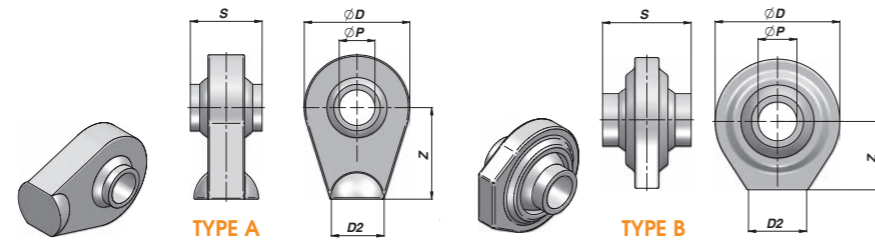


Code Bestell-Nr.	CAT	ØP (A12)	Z	S (h11)	ØD	D2	Type	kg
CSR0010495	-	16	60	20	46	30	A	0,27
CSR0010497	-	19	43	35	65	50	A	0,56
CSR0010497	1	22,1	43	35	65	50	A	0,54
CSR0010500	1	22,1	50	35	67	60	B	0,72
CSR0010505	1	22,1	75	35	67	58	B	0,94
CSR0010576	2	28,4	80	45	85	70	B	1,44

COUPLING - PAARUNG: STEEL/STEEL - STAHL/STAHL

MATERIAL:
STEEL - STAHL C40 - UNI EN 10083-1

CSR



Code Bestell-Nr.	CAT	ØP (A12)	Z	S (h11)	ØD	D2	Type	Base	kg
CSR0010695	1	19	50	44	55	25	A	(1)	0,42
CSR0010700	1	19	34	44	62	30x13	B	(2)	0,44
CSR0010705	1	19	50	44	62	30	A	(2)	0,65
CSR0010708	1	19	58	44	62	34	A	(2)	0,60
CSR0010710	1	19	60	44	62	34	A	(2)	0,62
CSR0010720	-	20	58	44	62	34	A	(2)	0,61
CSR0010725	-	22,1	50	35	62	26	A	(2)	0,52
CSR0010735	2	25,4	65	40	75	38	A	(2)	0,90
CSR0010740	2	25,4	65	51	75	38	A	(2)	0,94
CSR0010750	2	25,4	65	51	83	50	A	(2)	1,38
CSR0010760	2	25,4	70	51	85	50	A	(2)	1,62
CSR0010780	-	30	70	51	85	50	A	(2)	1,56
CSR0010810	-	30	65	55	83	50	A	(2)	1,36
CSR0010812	-	35	65	35	83	50	A	(2)	1,20
CSR0010820	-	40	85	75	108	60	A	(2)	3,42
CSR0010840	-	45	85	75	108	60	A	(2)	3,22
CSR0010860	-	50	85	75	108	60	A	(2)	3,02

(1) = ROUGH BASE - RAUHE BASIS
(2) = FLAT BASE - PLANBEARBEITETE BASIS

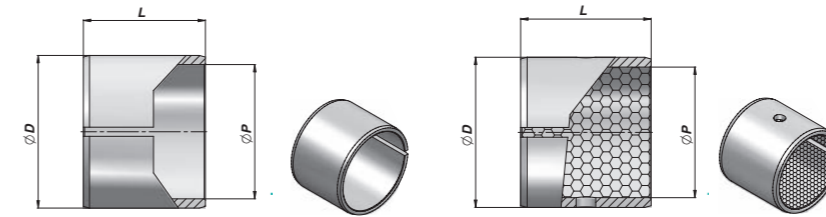
MATERIAL:
STEEL - STAHL C40 - UNI EN 10083-1



ADU/AKX

TYPE ADU

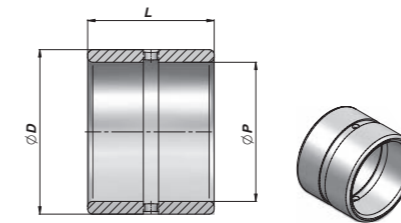
TYPE AKX



Code Bestell-Nr. Type ADU	Code Bestell-Nr. Type AKX	ØP	ØD	L	kg x 100
ADU020023010	AKX020023010	20	23	10	0,80
ADU020023020	AKX020023020	20	23	20	1,50
ADU025028015	AKX025028015	25	28	15	1,40
ADU025028020	AKX025028020	25	28	20	1,90
ADU025028025	AKX025028025	25	28	25	2,40
ADU030034020	AKX030034020	30	34	20	3,10
ADU030034030	AKX030034030	30	34	30	4,60
ADU030034040	AKX030034040	30	34	40	6,20
ADU035039020	AKX035039020	35	39	20	3,60
ADU035039030	AKX035039030	35	39	30	5,40
ADU035039040	AKX035039040	35	39	40	7,20
ADU035039050	AKX035039050	35	39	50	9,00
ADU040044020	AKX040044020	40	44	20	4,10
ADU040044030	AKX040044030	40	44	30	6,10
ADU040044040	AKX040044040	40	44	40	8,20
ADU040044050	AKX040044050	40	44	50	10,20

MATERIAL:
ADU = STEEL - STAHL + PTFE
AKX = STEEL - STAHL + BRONZE - BRONZE + POM

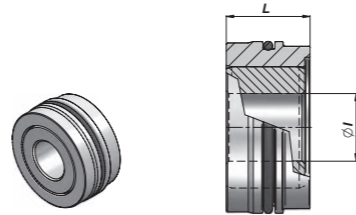
CBAGF



Code Bestell-Nr.	ØP	ØD	L	kg
CBAGF04030040	30	40	40	0,15
CBAGF05040050	40	50	50	0,23
CBAGF05040055	40	50	55	0,28
CBAGF05040070	40	50	70	0,37
CBAGF06050060	50	60	60	0,38
CBAGF06050090	50	60	90	0,59

MATERIAL:
STEEL - STAHL

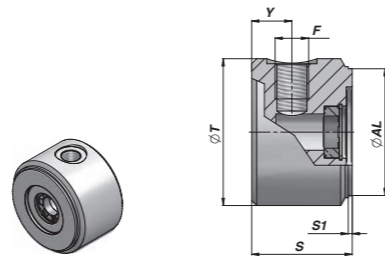
CBDF



Code Bestell-Nr.	Bore/Rod Kolben-Ø7Kolbenstange	ØI	l	kg	Box Verpackung	Pcs Stk
CBDF006003030	60/30	25	30	0,48	Z25CBDF06003030	25
CBDF006003530	60/35	25	30	0,48	Z25CBDF06003530	25
CBDF006004030	60/40	28	30	0,45	Z25CBDF06004030	25
CBDF006303030	63/30	25	30	0,53	Z25CBDF06303030	25
CBDF006303530	63/35	25	30	0,53	Z25CBDF06303530	25
CBDF006304030	63/40	28	30	0,51	Z25CBDF06304030	25
CBDF007003030	70/30	25	30	0,69	Z25CBDF07003030	25
CBDF007003530	70/35	25	30	0,69	Z25CBDF07003530	25
CBDF007004030	70/40	28	30	0,67	Z25CBDF07004030	25
CBDF007004530	70/45	28	30	0,67	Z25CBDF07004530	25

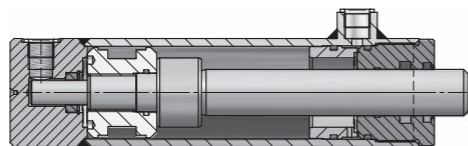
MATERIAL:
STEEL + HYDRAULIC CAST IRON - STAHL + HYDRAULIKGUSS

CFD

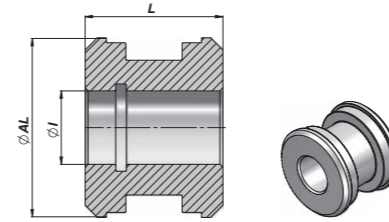


Code Bestell-Nr.	ØAL	ØT	F BSP	Y	S	S1	kg	Box Verpackung	Pcs Stk
CFD0600700625	60	70	3/8"	20	50	2	1,32	Z10CFD0600706	10
CFD0630730625	63	73	3/8"	20	50	2	1,44	Z10CFD0630736	10
CFD0700800625	70	80	3/8"	20	50	2	1,77	Z10CFD0700806	10
CFD0800920825	80	92	1/2"	20	50	2	2,30	Z05CFD0800928	5
CFD1001150825	100	115	1/2"	20	50	2	3,65	Z05CFD1001158	5

MATERIAL:
STEEL + BRONZE - STAHL + BRONZE



CGIN

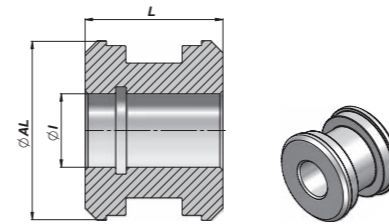


Code Bestell-Nr.	ØAL	ØS	ØD	F	LF	L	L1	kg	Seal Kits Dichtsätze
CGIN134112034	1"1/2	3/4"	1.875	1"3/4 - 12 UN	0.875	1.812	1.500	0,36	GKGGP1120034
CGIN212200118	2"	1"1/8	2.520	2"1/4 - 16 UN	0.827	1.875	1.500	0,55	GKGGP2000118
CGIN300212118	2"1/2	1"1/8	2.992	2"3/4 - 16 UN	0.906	2.250	1.875	1,10	GKGGP2120118
CGIN300212114	2"1/2	1"1/4	"	"	"	"	"	1,00	GKGGP2120114
CGIN300212112	2"1/2	1"1/2	"	"	"	"	"	0,85	GKGGP2120112
CGIN312300112	3"	1"1/2	3.504	3"1/4 - 16 UN	1.181	2.300	1.925	1,50	GKGGP3000112
CGIN312300134	3"	1"3/4	"	"	"	"	"	1,33	GKGGP3000134
CGIN400312134	3"1/2	1"3/4	4.016	3"3/4 - 12 UN	1.260	2.375	2.000	2,35	GKGGP3120134
CGIN400312200	3"1/2	2"	"	"	"	"	"	2,10	GKGGP3120200
CGIN412400200	4"	2"	4.488	4"1/4 - 12 UN	1.772	3.250	2.750	4,00	GKGGP4000200
CGIN412400212	4"	2"1/2	"	"	"	"	"	3,20	GKGGP4000212
CGIN558500212	5"	2"1/2	5.669	5"1/4 - 12 UN	1.969	3.375	2.875	6,80	GKGGP5000212
CGIN558500234	5"	2"3/4	"	"	"	"	"	6,30	GKGGP5000234
CGIN558500300	5"	3"	"	"	"	"	"	5,80	GKGGP5000300
CGIN634600300	6"	3"	6.693	6"1/4 - 12 UN	2.165	3.688	3.125	9,40	GKGGP6000300
CGIN634600312	6"	3"1/2	"	"	"	"	"	8,30	GKGGP6000312

MATERIAL:
HYDRAULIC CAST IRON - HYDRAULIKGUSS UNI 5007-G25

SEALS: SEE PAGE 95
DICHTUNGEN: SIEHE SEITE 95

CTIN

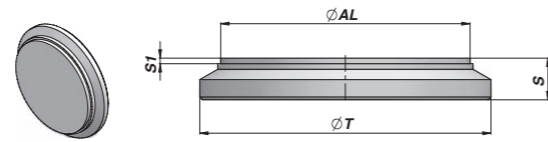


Code Bestell-Nr.	ØAL	ØI	L	kg	Seal kits Dichtsätze
CTIN112016100	1"1/2	0.630	1.000	0,11	GKGT112M160
CTIN200020112	2"	0.787	1.500	0,30	GKGT200M200
CTIN212020112	2"1/2	0.787	1.500	0,58	GKGT212M200
CTIN212023112	2"1/2	0.906	1.500	0,53	GKGT212M230
CTIN300030134	3"	1.181	1.750	0,82	GKGT300M300
CTIN312033134	3"1/2	1.299	1.750	1,20	GKGT312M330
CTIN400033134	4"	1.299	1.750	1,88	GKGT400M330
CTIN500040200	5"	1.575	2.188	3,35	GKGT500M400
CTIN600052214	6"	2.047	2.375	5,90	GKGT600M520

MATERIAL:
STEEL - STAHL 9SMn28

SEALS: SEE PAGE 95
DICHTUNGEN: SIEHE SEITE 95

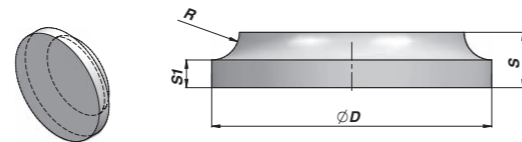
CFIN



Code Bestell-Nr.	ØAL	ØT	S	S1	kg
CFIN112200012	1"1/2	1.875	0.500	0.094	0,15
CFIN200212012	2"	2.500	0.500	0.125	0,26
CFIN212300012	2"1/2	2.963	0.500	0.125	0,38
CFIN300312012	3"	3.543	0.590	0.125	0,66
CFIN312400034	3"1/2	3.937	0.690	0.125	1,00
CFIN400412034	4"	4.500	0.750	0.125	1,45
CFIN500558078	5"	5.709	0.880	0.125	2,75
CFIN600634100	6"	6.750	1.000	0.125	4,30

MATERIAL:
STEEL - STAHL S355J0 (Fe510C) - S355JR A(105)

CFIP

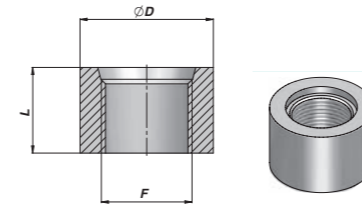


Code Bestell-Nr.	ØAL	ØD	S	S1	R	kg
CFIP012200	2"	2.047	0.472	0.196	0.276	0,17
CFIP015212	2"1/2	2.559	0.591	0.315	0.276	0,27
CFIP015300	3"	3.071	0.591	0.276	0.315	0,47
CFIP017312	3"1/2	3.543	0.669	0.354	0.315	0,77
CFIP020400	4"	4.055	0.787	0.393	0.394	1,10
CFIP023500	5"	5.039	0.906	0.434	0.472	1,90
CFIP025600	6"	6.063	0.984	0.512	0.472	3,30

Ø AL = TUBE: BORE - ZYLINDERROHR: INNEN Ø

MATERIAL:
STEEL - STAHL S355J0 (Fe510C) - S355JR (A105)

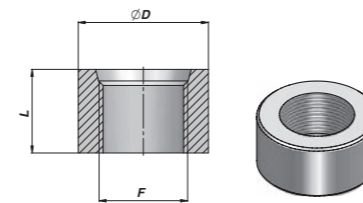
CBSJ



Code Bestell-Nr.	F	L	ØD	kg x 100
CBSJ475006	9/16" - 18 SAE 06	0.708	0.866	3,50
CBSJ475008	3/4" - 16 SAE 08	0.708	1.102	5,20
CBSJ475012	1"1/16 - 12 SAE 12	1.023	1.496	13,00
CBSJ475016	1"1/2 - 12 SAE 16	1.259	1.771	20,50

MATERIAL:
STEEL - STAHL 9SMn28

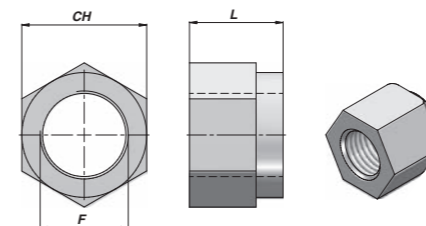
DBSNPT



Code Bestell-Nr.	F	L	ØD	kg x 100
CBSNP0000014	1/4" NPT	0.500	1.024	3,00
CBSNP0000038	3/8" NPT	0.500	1.024	3,00
CBSNP0000012	1/2" NPT	0.687	1.260	6,00
CBSNP0000034	3/4" NPT	0.687	1.496	8,00

MATERIAL:
STEEL - STAHL 9SMn28

CDAIN/CDBIN

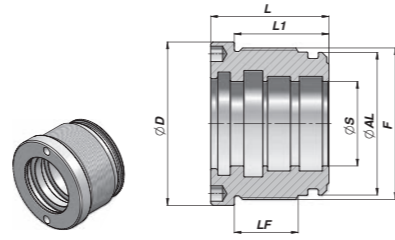


Code Bestell-Nr.	F	L	ØD	kg x 100
CDAIN00012020	1/2" - 20 UNF	0.591	0.748	2,00
CDAIN00058018	5/8" - 18 UNF	0.748	0.945	5,00
CDAIN00034016	3/4" - 16 UNF	0.866	1.063	7,00
CDAIN00078014	7/8" - 14 UNF	0.984	1.260	10,00
CDAIN00118012	1"1/8 - 12 UNF	1.181	1.614	21,00
CDAIN00114012	1"1/4 - 12 UNF	1.378	1.811	34,00
CDAIN00112012	1"1/2 - 12 UNF	1.614	2.165	48,00

Code Bestell-Nr.	F	L	ØD	kg x 100
CDBIN00114012	1"1/4 - 12 UNF	1.102	1.811	24,00

MATERIAL:
STEEL - STAHL UNI 7473 - 7474

CGXX

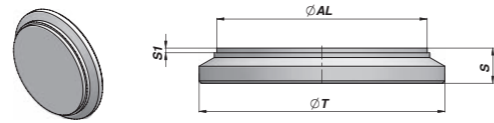


Code Bestell-Nr.	ØAL	ØS	ØD	F	LF	L	L1	kg	Seal Kits Dichtsätze
CGXX050040020	40	20	49	M44x1,5	19	32	40	0,28	GKGCXX040020
CGXX050040025	40	25	49	M44x1,5	19	32	40	0,23	GKGCXX040025
CGXX060050025	50	25	59	M54x1,5	22	35	43	0,46	GKGCXX050025
CGXX060050030	50	30	59	M54x1,5	22	40	43	0,39	GKGCXX050030
CGXX070060030	60	30	69	M64x1,5	27	40	50	0,80	GKGCXX060030
CGXX070060035	60	35	69	M64x1,5	27	40	50	0,70	GKGCXX060035
CGXX070060040	60	40	69	M64x1,5	27	40	50	0,60	GKGCXX060040
CGXX080070035	70	35	79	M74x1,5	27	40	50	1,06	GKGCXX070035
CGXX080070040	70	40	79	M74x1,5	27	40	50	0,94	GKGCXX070040
CGXX095080040	80	40	94	M85x2	33	50	60	1,90	GKGCXX080040

MATERIAL:
STAINLESS STEEL - ROSTFREIEM STAHL

SEALS: SEE PAGE 95
DICHTUNGEN: SIEHE SEITE 95

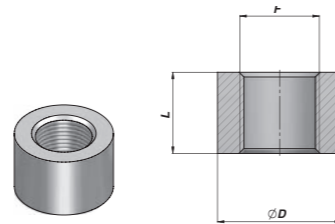
CFX



Code Bestell-Nr.	ØAL	ØT	S	S1	kg
CFX00040050	40	50	10	2	0,13
CFX00050060	50	60	10	2	0,19
CFX00060070	60	70	12	2	0,33
CFX00070080	70	80	12	2	0,43
CFX00080095	80	95	12	2	0,60

MATERIAL:
STAINLESS STEEL - ROSTFREIEM STAHL

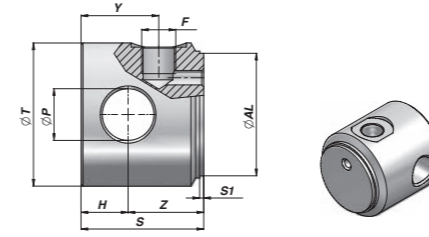
CBSX



Code Bestell-Nr.	F BSP	L	ØD	kg
CBSX040000	1/4"	15	20	3,00
CBSX060000	3/8"	17	26	4,00
CBSX080000	1/2"	20	32	4,00

MATERIAL:
STAINLESS STEEL - ROSTFREIEM STAHL

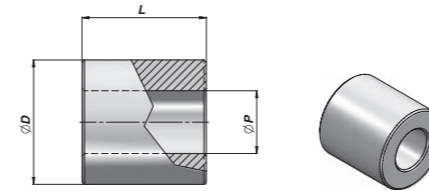
CFEX



Code Bestell-Nr.	ØAL	ØT	ØP	Z	H	F BSP	Y	S	S1	kg
CFEX040050416	40	50	16,20	35	15	1/4"	30	50	2	0,60
CFEX050060620	50	60	20,25	40	20	3/8"	38	60	2	1,10
CFEX060070625	60	70	25,25	37	23	3/8"	38	60	2	1,40
CFEX070080625	70	80	25,25	37	23	3/8"	38	60	2	1,95

MATERIAL:
AISI 316 A STAINLESS STEEL - ROSTFREIEM STAHL

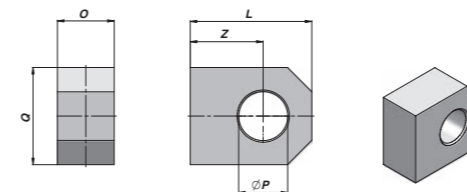
CBX



Code Bestell-Nr.	ØP	ØD	L	kg
CBX016035030	16,20	35	30	0,18
CBX020040040	20,25	40	40	0,29
CBX025050050	25,25	50	50	0,56
CBX030060060	30,25	60	60	0,97

MATERIAL:
AISI 316 A STAINLESS STEEL - ROSTFREIEM STAHL

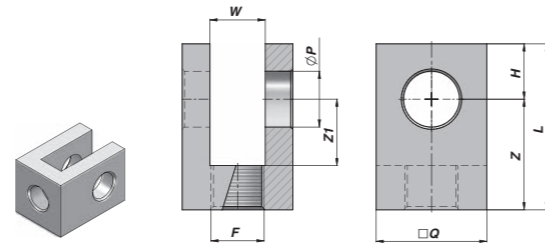
COFX



Code Bestell-Nr.	ØP	Ø	Q	Z	L	kg
COFX0200000	20,25	25	45	30	50	0,35

MATERIAL:
AISI 316 A STAINLESS STEEL - ROSTFREIEM STAHL

CFFX

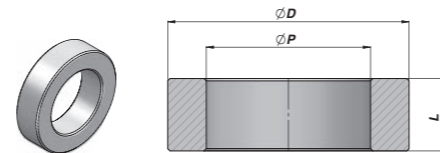


Code Bestell-Nr.	ØP	L	Z	Z1	H	□Q	W	F	kg
CFFX0161615	16,20	55	39	24	16	35	16	M16x1,5	0,30
CFFX0202015	20,25	65	45	30	20	40	20	M20x1,5	0,40
CFFX0252420	25,25	75	50	30	25	50	25	M24x2	0,75

MATERIAL:
AISI 316 A STAINLESS STEEL - ROSTFREIEM STAHL

SCHWEISSBARER RING AUS ROSTFREIEM STAHL FÜR GELENKLAGER "GE TGR" I STAINLESS STEEL WELD-RING FOR "GE TGR" BALL-JOINT

CAGEX

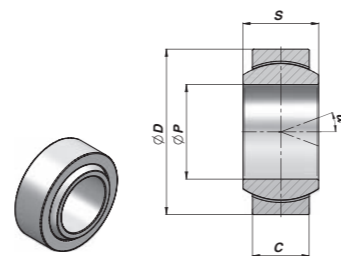


Code Bestell-Nr.	For Für	ØD	L	ØP	kg
CAGEX050035	GE ø20	50	14	35	0,11
CAGEX069042	GE ø25	69	19	42	0,35
CAGEX075047	GE ø30	75	20	47	0,41
CAGEX094062	GE ø40	94	26	62	0,79

MATERIAL:
AISI 316 A STAINLESS STEEL - ROSTFREIEM STAHL

WARTUNGSFREIES RADIALGELENKLAGER I MAINTENANCE FREE RADIAL BALL-JOINT

GE TGR



Code Bestell-Nr. Type TGR	ØP	ØD	S	C	α	FC (kN)	kg
CGE0003603	20	35	16	12	9	41,5	0,06
CGE0003604	25	42	20	16	7	68	0,12
CGE0003605	30	47	22	18	6	88	0,16
CGE0003607	40	62	28	22	7	140	0,32

FC = MAX DYNAMIC LOAD - MAX DYNAMISCHE LAST
COUPLING - PAARUNG: HARTCHROM/PTFE - CHROM/PTFE

MATERIAL: STAINLESS STEEL - ROSTFREIEM STAHL

FT

Code Bestell-Nr.	O.D. Außen Ø	I.D. Innen Ø	kg/m
mm			
FT03002000	30	20	3,08
FT03502500	35	25	3,70
FT04003000	40	30	4,32
FT04203200	42	32	4,56
FT04503500	45	35	4,93
FT04804000	48	40	4,34
FT05004000	50	40	5,55
FT05504500	55	45	6,17
FT05805000	58	50	5,33
FT06005000	60	50	6,78
FT06205000	62	50	8,29
FT06505000	65	50	10,64
FT06505500	65	55	7,40
FT06806000	68	60	6,31
FT07005500	70	55	11,56
FT07006000	70	60	8,01
FT07206000	72	60	9,77
FT07306300	73	63	8,38
FT07506000	75	60	12,48
FT07506300	75	63	10,21

MATERIAL: STEEL - STAHL St 52.3 DIN 2393 ISO H9

GEHONTEST ZYLINDERROHR H8 I HONED TUBE H8

FTL

Code Bestell-Nr.	O.D. Außen Ø	I.D. Innen Ø	kg/m
mm			
FTL0400300	40	30	4,31
FTL0420320	42	32	4,56
FTL0500400	50	40	5,55
FTL0550400	55	40	8,78
FTL0550450	55	45	6,16
FTL0600500	60	50	6,78
FTL0650500	65	50	10,63
FTL0650550	65	55	7,39
FTL0700500	70	50	14,79
FTL0700600	70	60	8,01
FTL0730630	73	63	8,38
FTL0750600	75	60	12,48
FTL0750630	75	63	10,21
FTL0750650	75	65	8,63
FTL0800600	80	60	17,25
FTL0800650	80	65	13,40
FTL0800700	80	70	9,24
FTL0850700	85	70	14,33
FTL0900700	90	70	19,72
FTL0900750	90	75	15,25
FTL0900800	90	80	10,48
FTL0950800	95	80	16,18
FTL1000800	100	80	22,18
FTL1000850	100	85	17,10
FTL1050900	105	90	18,02

MATERIAL: STEEL - STAHL St 52.3 DIN 2391 ISO H8

TUBE IN INCHES ON REQUEST - ZYLINDERROHR IN ZOLL AUF ANFRAGE

TUBES AND CHROME PLATED RODS CAN BE SUPPLIED CUT TO MEASURE - KOLBENSTANGEN UND ROHRE SIND AUCH NACH MASS GESCHNITTEN LIEFERBAR



Code Bestell-Nr.	O.D. Außen Ø	I.D. Innen Ø	kg/m
mm			
FT07506500	75	65	8,63
FT07807000	78	70	7,30
FT08006500	80	65	13,41
FT08007000	80	70	9,25
FT08207000	82	70	11,24
FT08507000	85	70	14,33
FT08507500	85	75	9,86
FT09007500	90	75	15,26
FT09008000	90	80	10,48
FT09208000	92	80	12,73
FT09508000	95	80	16,18
FT09508500	95	85	11,10
FT10008500	100	85	17,11
FT10009000	100	90	11,71
FT10209000	102	90	14,21
FT10509000	105	90	18,03
FT11210000	112	100	15,68
FT11510000	115	100	19,87
FT12511000	125	110	21,73

FAC

Code Bestell-Nr.	Ø mm	kg/m
FAC008L000	8	0,40
FAC010L000	10	0,62
FAC012L000	12	0,89
FAC014L000	14	1,21
FAC015L000	15	1,39
FAC016L000	16	1,58
FAC018L000	18	2,00
FAC020L000	20	2,47
FAC022L000	22	2,98
FAC025L000	25	3,95
FAC028L000	28	4,83
FAC030L000	30	5,55
FAC032L000	32	6,31
FAC035L000	35	7,55
FAC036L000	36	7,99
FAC038L000	38	8,91
FAC040L000	40	9,86
FAC045L000	45	12,50
FAC050L000	50	15,40

FAC

Code Bestell-Nr.	Ø mm	Ø Inches Ø Zoll	kg/m
FAC013L000	12,70	1/2"	0,99
FAC0159L00	15,87	5/8"	1,56
FAC019L000	19,05	3/4"	2,22
FAC023L000	22,22	7/8"	3,04
FAC026L000	25,40	1"	3,98
FAC029L000	28,58	1 1/8"	5,03
FAC031L000	31,75	1 1/4"	6,22
FAC034L000	34,94	1 3/8"	7,51
FAC039L000	38,10	1 1/2"	8,96

MATERIAL: STEEL - STAHL S1 52.3 DIN 2391 ISO H8 I CHROME - CHROM: 25 MICRON ± 5

OTHER DIMENSIONS ON REQUEST - ANDERE MASSE AUF ANFRAGE

CHROME PLATED ROD ON REQUEST:

C45 INDUCION-HARDENED
C45 CHROME 45±5 my and 70±5 my
42CrM04 RECLAIMED
42CrM04 RECLAIMED and INDUCION-HARDENED
EXTERNALLY CHROMIUM PLATED TUBE

Code Bestell-Nr.	Ø mm	kg/m
FAC055L000	55	18,70
FAC056L000	56	19,30
FAC060L000	60	22,20
FAC063L000	63	24,46
FAC065L000	65	26,08
FAC070L000	70	30,20
FAC075L000	75	34,72
FAC080L000	80	39,50
FAC090L000	90	49,91
FAC095L000	95	55,61
FAC100L000	100	61,62
FAC105L000	105	68,22
FAC110L000	110	74,60
FAC120L000	120	88,60
FAC125L000	125	96,50
FAC130L000	130	104,20
FAC140L000	140	120,84
FAC150L000	150	138,72

Code Bestell-Nr.	Ø mm	Ø Inches Ø Zoll	kg/m
FAC044L000	44,45	1 3/4"	12,20
FAC051L000	50,80	2"	15,93
FAC057L000	57,15	2 1/4"	20,16
FAC064L000	63,50	2 1/2"	24,89
FAC076L000	76,20	3"	35,84
FAC089L000	88,90	3 1/2"	48,40
FAC102L000	101,60	4"	63,60
FAC114L000	114,30	4 1/2"	80,00

VERCHROMTE KOLBENSTANGE AUF ANFRAGE:

C45 INDUKTIV GEHÄRTET
C45 CHROM 45±5 my und 70±5 my
42 CrM04 VERGÜTET
42 CrM04 VERGÜTET und INDUKTIV GEHÄRTET
AUSSENVERCHROMTES ZYLINDERROHR



FACVI20MnV6

Code Bestell-Nr.	Ø mm	kg/m
FACV020L00	20	3,47
FACV025L00	25	3,95
FACV030L00	30	5,55
FACV035L00	35	7,55
FACV040L00	40	9,86
FACV045L00	45	12,50
FACV050L00	50	15,40
FACV060L00	60	22,20
FACV070L00	70	30,20
FACV080L00	80	39,50
FACV090L00	90	49,91
FACV100L00	100	61,69

MATERIAL:
STEEL - STAHL 20MnV6
CHROME - CHROM: 25 MICRON ± 5

FAX 304IAISI 304

Code Bestell-Nr.	Ø mm	kg/m
FAX304.020	20	3,47
FAX304.025	25	3,95
FAX304.030	30	5,55
FAX304.035	35	7,55
FAX304.040	40	9,86
FAX304.045	45	12,50
FAX304.050	50	15,40
FAX304.060	60	22,20
FAX304.070	70	30,20

MATERIAL:
STAINLESS STEEL - ROSTFREIEM STAHL: AISI 304
CHROME - CHROM: 25 MICRON ± 5

FACMI500H

Code Bestell-Nr.	Ø mm	kg/m
FACM020000	20	3,47
FACM025000	25	3,95
FACM030000	30	5,55
FACM035000	35	7,55
FACM040000	40	9,86
FACM045000	45	12,50
FACM050000	50	15,40
FACM060000	60	22,20
FACM070000	70	30,20
FACM080000	80	39,50
FACM090000	90	49,91
FACM100000	100	61,69

MATERIAL:
STEEL - STAHL UNI C45 - SAE 1045
CHROME - CHROM: 25 MICRON ± 5

FAX 316IAISI 316

Code Bestell-Nr.	Ø mm	kg/m
FAX316.020	20	3,47
FAX316.025	25	3,95
FAX316.030	30	5,55
FAX316.035	35	7,55
FAX316.040	40	9,86
FAX316.050	50	15,40

MATERIAL:
STAINLESS STEEL - ROSTFREIEM STAHL: AISI 316
CHROME - CHROM: 25 MICRON ± 5

AISI 316-GEHONTES ZYLINDERROHR H8 I AISI316 HONED TUBE H8

FTLX

Code Bestell-Nr.	O.D. Außen Ø	I.D. Innen Ø	kg/m
FTLX050040	50	40	5,55
FTLX060050	60	50	6,78
FTLX070060	70	60	8,01
FTLX080070	80	70	9,25

MATERIAL:
STAINLESS STEEL - ROSTFREIEM STAHL: AISI 316

ON REQUEST: STAINLESS STEEL ROD RECIFIED (H8) - AISI 304
AUF ANFRAGE: KOLBENSTANGE AUS ROSTFREIEM STAHL GESCHLIFFEN (H8) - AISI 304
OTHER DIMENSIONS ON REQUEST - ANDERE MASSE AUF ANFRAGE

FTE

Code Bestell-Nr.	Ø mm	Thickness Wandstärke mm	kg/m	Code Bestell-Nr.	Ø mm	Thickness Wandstärke mm	kg/m
FTE0604000	6	1	0,12	FTE1612000	16	2	0,69
FTE0603000	6	1,5	0,16	FTE1815000	18	1,5	0,61
FTE0602000	6	2	0,20	FTE1814000	18	2	0,79
FTE0806000	8	1	0,17	FTE1813000	18	2,5	0,96
FTE0805000	8	1,5	0,24	FTE2016000	20	2	0,89
FTE0804000	8	2	0,30	FTE2015000	20	2,5	1,08
FTE1008000	10	1	0,22	FTE2014000	20	3	1,26
FTE1007000	10	1,5	0,31	FTE2218000	22	2	0,99
FTE1006000	10	2	0,39	FTE2217000	22	2,5	1,20
FTE1210000	12	1	0,27	FTE2521000	25	2	1,13
FTE1209000	12	1,5	0,38	FTE2520000	25	2,5	1,39
FTE1208000	12	2	0,49	FTE2519000	25	3	1,63
FTE1411000	14	1,5	0,46	FTE2824000	28	2	1,28
FTE1410000	14	2	0,59	FTE2823000	28	2,5	1,57
FTE1512000	15	1,5	0,49	FTE2822000	28	3	1,85
FTE1511000	15	2	0,64	FTE3024000	30	3	2,00
FTE1613000	16	1,5	0,53	FTE3022000	30	4	2,57

MATERIAL: STEEL - STAHL
ST 37.4 SS - DIN 1630 NORMALIZED NBK - PHOSPHATED - GENORMT NBK - PHOSPHATIERT

HYDRAULICGUSS | CAST IRON

FGP

Code Bestell-Nr.	Ø mm	kg/m	Code Bestell-Nr.	Ø mm	kg/m
FGP0350000	35	7,21	FGP1250000	125	91,93
FGP0400000	40	9,41	FGP0300000	130	99,43
FGP0450000	45	11,91	FGP1400000	140	115,31
FGP0500000	50	14,71	FGP1450000	145	123,70
FGP0550000	55	17,80	FGP1500000	150	132,37
FGP0600000	60	21,18	FGP1550000	155	141,35
FGP0650000	65	24,86	FGP1600000	160	150,61
FGP0700000	70	28,83	FGP1700000	170	170,03
FGP0750000	75	33,09	FGP1800000	180	190,62
FGP0800000	80	37,65	FGP1900000	190	212,39
FGP0850000	85	42,51	FGP2000000	200	235,33
FGP0900000	90	47,65	FGP2100000	210	259,45
FGP0950000	95	53,10	FGP2200000	220	284,75
FGP1000000	100	58,83	FGP2300000	230	311,23
FGP1050000	105	64,86	FGP2500000	250	367,71
FGP1100000	110	71,19	FGP2600000	260	397,71
FGP1150000	115	77,81	FGP2700000	270	428,89
FGP1200000	120	84,72			

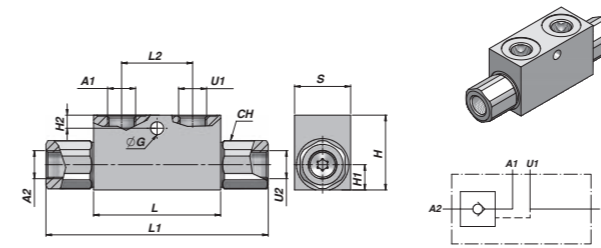
MATERIAL:
CAST IRON - HYDRAULICGUSS UNI 5007 - G25

ON REQUEST: WHITE ZINC PLATED FEED PIPE
AUF ANFRAGE: WEISSVERZINKTE STAHLRÖHRE FÜR HYDRAULIKANLAGEN
OTHER DIMENSTIONS ON REQUEST - ANDERE MASSE AUF ANFRAGE

VORGESTEUERTES SPERRVENTIL - (KEGELSPERRUNG) EINFACHWIRKEND
PILOT OPERATED CHECK VALVE - (POPPET TYPE) SINGLE ACTING



VRSE-F ...FF

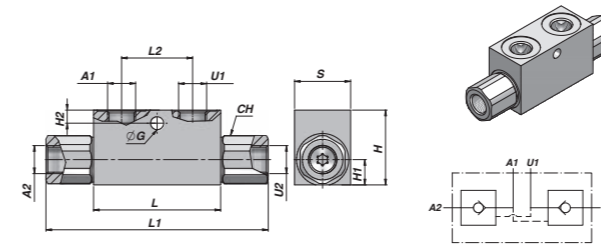


Code Bestell-Nr.	A1-U1 BSP	A2-U2 BSP	Q MAX l/min	P MAX Bar	PILOT RATIO	Type Typ	L	L1	L2	H1	H2	ØG	CH	H	S	kg
VSG311.F00404	1/8"	1/8"	20	350	1:4	VRSE-F 005 FF	53	86	20	11	-	-	17	30	20	0,30
VSG311.F10454	1/4"	1/4"	30	350	1:4 5	VRSE-F 010 FF	68	118	38	13	7	7	24	40	30	0,68
VSG311.F15454	3/8"	3/8"	30	350	1:4 5	VRSE-F 015 FF	68	118	38	13	7	7	24	40	30	0,63
VSG311.F20404	3/8"	3/8"	50	300	1:4	VRSE-F 020 FF	80	144	40	16	15	8,5	27	50	30	0,97
VSG311.F25404	1/2"	1/2"	50	300	1:4	VRSE-F 025 FF	80	144	40	16	15	8,5	27	50	30	0,90
VSG311.F30404	1/2"	1/2"	80	300	1:4	VRSE-F 030 FF	90	171	40	20	15	8,5	30	60	40	1,69
VSG311.F40404	3/4"	3/4"	120	300	1:4	VRSE-F 040 FF	107	196	60	23	16	8,5	41	70	50	3,06

OPENING PRESSURE - ÖFFNUNGSDRUCK: BAR 0,5 - 4 (standard) - 8
CYLINDER MOUNTING ACCESSORIES: SEE PAGE 89
MONTAGE AM ZYLINDER ZUBEHÖRE: SIEHE SEITE 89
MATERIAL: STEEL - STAHL

VORGESTEUERTES SPERRVENTIL - (KEGELSPERRUNG) DOPPELWIRKEND
PILOT OPERATED CHECK VALVE - (POPPET TYPE) DOUBLE ACTING

VRDEF ...FF



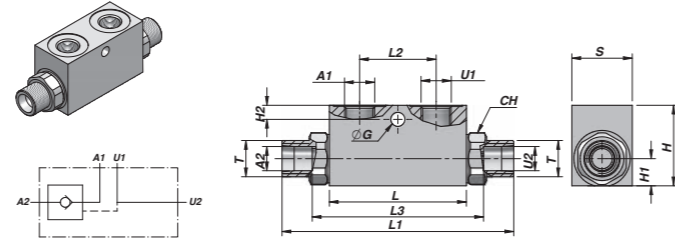
Code Bestell-Nr.	A1-U1 BSP	A2-U2 BSP	Q MAX l/min	P MAX Bar	PILOT RATIO	Type Typ	L	L1	L2	H1	H2	ØG	CH	H	S	kg
VSG312.F00404	1/8"	1/8"	20	350	1:4	VRDE-F 005 FF	53	86	20	11	-	-	17	30	20	0,30
VSG312.F10454	1/4"	1/4"	30	350	1:4 5	VRDE-F 010 FF	68	118	38	13	7	7	24	40	30	0,69
VSG312.F15454	3/8"	3/8"	30	350	1:4 5	VRDE-F 015 FF	68	118	38	13	7	7	24	40	30	0,64
VSG312.F20404	3/8"	3/8"	50	300	1:4	VRDE-F 020 FF	80	144	40	16	15	8,5	27	50	30	0,98
VSG312.F25404	1/2"	1/2"	50	300	1:4	VRDE-F 025 FF	80	144	40	16	15	8,5	27	50	30	0,91
VSG312.F30404	1/2"	1/2"	80	300	1:4	VRDE-F 030 FF	90	171	40	20	15	8,5	30	60	40	1,72
VSG312.F40404	3/4"	3/4"	120	300	1:4	VRDE-F 040 FF	107	196	60	23	16	8,5	41	70	50	3,11

OPENING PRESSURE - ÖFFNUNGSDRUCK: BAR 0,5 - 4 (standard) - 8
CYLINDER MOUNTING ACCESSORIES: SEE PAGE 89
MONTAGE AM ZYLINDER ZUBEHÖRE: SIEHE SEITE 89
MATERIAL: STEEL - STAHL

FOR A COMPLETE RANGE OF VALVES AND FIINGS PLEASE SEE CATALOGUE «B»
FÜR DIE KOMPLETTE PALETTE VON VENTILEN UND VERSCHRAUBUNGEN BITTE KATALOG «B» SEHEN.

VORGESTEUERTES SPERRVENTIL DIN 2353 - (KEGELSPERRUNG) - EINFACHWIRKEND I
PILOT OPERATED CHECK VALVE DIN 2353 - (POPPETTYPE) - SINGLE ACTING

VRSE-AZ ...FF



Code Bestell-Nr.	A1-U1 BSP	A2-U2	T	Q MAX l/ min	Q MAX Bar	PILOT RATIO	Type Typ	L	L1	L2	L3	H1	H2	ØG	CH	H	S	kg
VSG321.F10454	1/4"	ø12	M18x1,5	30	350	1:4,5	VRSE-AZ 010 FF	68	138	38	86	13	7	7	24	40	30	0,67
VSG321.F15454	3/8"	ø12	M18x1,5	30	350	1:4,5	VRSE-AZ 015 FF	68	138	38	86	13	7	7	24	40	30	0,66
VSG321.F20404	3/8"	ø15	M22x1,5	50	300	1:4	VRSE-AZ 020 FF	80	166	40	108	16	15	8,5	27	50	30	0,97
VSG321.F25404	1/2"	ø15	M22x1,5	50	300	1:4	VRSE-AZ 025 FF	80	166	40	108	16	15	8,5	27	50	30	0,91
VSG321.F30404	1/2"	ø18	M26x1,5	80	300	1:4	VRSE-AZ 030 FF	90	180	40	133	20	15	8,5	30	60	40	1,67

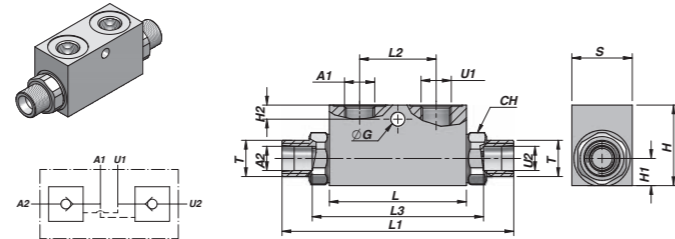
OPENING PRESSURE - ÖFFNUNGSDRUCK: BAR 0,5 - 4 (standard) - 8
 WITHOUT NUT AND CUTTING RING - OHNE ÜBERWURFMUTTER UND SCHNEIDERING
 CYLINDER MOUNTING - MONTAGE AM ZYLINDER

ACCESSORIES: SEE PAGE 89
 ZUBEHÖRE: SIEHE SEITE 89

MATERIAL: STEEL - STAHL

VORGESTEUERTES SPERRVENTIL DIN 2353 - (KEGELSPERRUNG) - DOPPELWIRKEND I
PILOT OPERATED CHECK VALVE DIN 2353 - (POPPETTYPE) - DOUBLE ACTING

VRDE-AZ ...FF



Code Bestell-Nr.	A1-U1 BSP	A2-U2	T	Q MAX l/ min	Q MAX Bar	PILOT RATIO	Type Typ	L	L1	L2	L3	H1	H2	ØG	CH	H	S	kg
VSG322.F10454	1/4"	ø12	M18x1,5	30	350	1:4,5	VRDE-AZ 010 FF	68	138	38	86	13	7	7	24	40	30	0,67
VSG322.F15454	3/8"	ø12	M18x1,5	30	350	1:4,5	VRDE-AZ 015 FF	68	138	38	86	13	7	7	24	40	30	0,66
VSG322.F20404	3/8"	ø15	M22x1,5	50	300	1:4	VRDE-AZ 020 FF	80	166	40	108	16	15	8,5	27	50	30	0,97
VSG322.F25404	1/2"	ø15	M22x1,5	50	300	1:4	VRDE-AZ 025 FF	80	166	40	108	16	15	8,5	27	50	30	0,91
VSG322.F30404	1/2"	ø18	M26x1,5	80	300	1:4	VRDE-AZ 030 FF	90	180	40	133	20	15	8,5	30	60	40	1,67

OPENING PRESSURE - ÖFFNUNGSDRUCK: BAR 0,5 - 4 (standard) - 8
 WITHOUT NUT AND CUTTING RING - OHNE ÜBERWURFMUTTER UND SCHNEIDERING
 CYLINDER MOUNTING - MONTAGE AM ZYLINDER

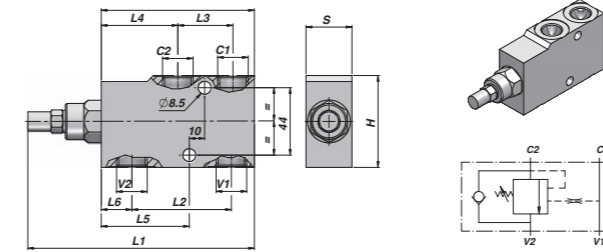
ACCESSORIES: SEE PAGE 89
 ZUBEHÖRE: SIEHE SEITE 89

MATERIAL: STEEL - STAHL

FOR A COMPLETE RANGE OF VALVES AND FITTINGS PLEASE SEE CATALOGUE »B«.
 FÜR DIE KOMPLETTE PALETTE VON VENTILEN UND VERSCHRAUBUNGEN BITTE KATALOG »B« SEHEN.

SENKBREMSVENTIL - EINFACHWIRKEND I
OVERCENTER VALVE - SINGLE ACTING

VBCD/A SE



Code Bestell-Nr.	V1-V2 BSP	C1- C2 BSP	Q MAX l/min	W.P. MAX Bar	PILOT RATIO	Type Typ	L	L1	L2	L3	L4	L5	L6	H	S	kg
V2190.A400	1/4"	1/4"	20	350	1:4,5	VBCD/A SE 1/4"	100	149	60	30	50	55	20	60	30	1,31
V2190.A600	3/8"	3/8"	40	350	1:4,5	VBCD/A SE 3/8"	100	149	60	30	50	55	20	60	30	1,26
V2190.A800	1/2"	1/2"	60	350	1:4,5	VBCD/A SE 1/2"	100	149	65	36	50	57,5	20	60	30	1,20
V2190.A120	3/4"	3/4"	95	350	1:5,5	VBCD/A SE 3/4"	127	192	85	46	62,5	75	23,5	80	35	2,37

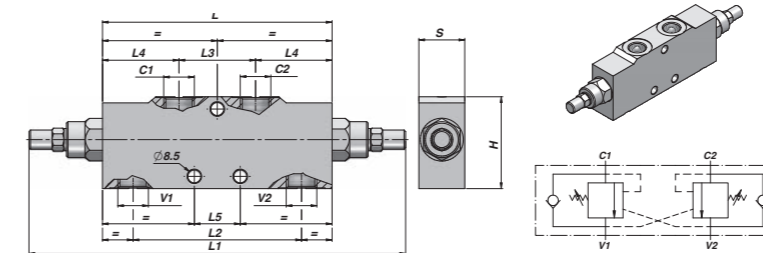
LINE MOUNTING
 REIHENMONTAGE

MATERIAL: STEEL - STAHL

ACCESSORIES: SEE PAGE 89
 ZUBEHÖRE: SIEHE SEITE 89

SENKBREMSVENTIL - DOPPELWIRKEND I
OVERCENTER VALVE - DOUBLE ACTING

VBCD/A DE



Code Bestell-Nr.	V1-V2 BSP	C1- C2 BSP	Q MAX l/min	W.P. MAX Bar	PILOT RATIO	Type Typ	L	L1	L2	L3	L4	L5	L6	H1	H2	H	S	kg
V2290.A400	1/4"	1/4"	20	350	1:4,5	VBCD/A DE 1/4"	150	148	110	50	50	30	44	32	28	60	30	1,97
V2290.A600	3/8"	3/8"	40	350	1:4,5	VBCD/A DE 3/8"	150	148	110	50	50	30	44	32	28	60	30	1,94
V2290.A800	1/2"	1/2"	60	350	1:4,5	VBCD/A DE 1/2"	150	148	110	50	50	30	44	32	28	60	30	1,89
V2290.A120	3/4"	3/4"	95	350	1:5,5	VBCD/A DE 3/4"	190	320	143	65	62,5	44	64	40	40	80	35	3,82

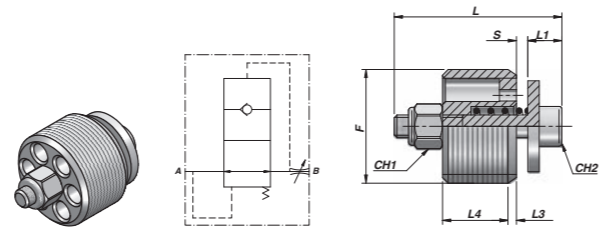
LINE MOUNTING
 REIHENMONTAGE

MATERIAL: STEEL - STAHL

ACCESSORIES: SEE PAGE 89
 ZUBEHÖRE: SIEHE SEITE 89

FOR A COMPLETE RANGE OF VALVES AND FITTINGS PLEASE SEE CATALOGUE »B«.
 FÜR DIE KOMPLETTE PALETTE VON VENTILEN UND VERSCHRAUBUNGEN BITTE KATALOG »B« SEHEN.

VUBA



Code Bestell-Nr.	F BSP	Q MAX l/min	P MAX Bar	S	Type Typ	L	L1	L3	L4	CH1	CH2	kg x 100
VCG390.100800	1/4"	29	350	0,8	VUBA 010	19	5	1	7	5,5	2,5	1,00
VCG390.201500	3/8"	45	350	1,5	VUBA 020	23	5	1,5	9,5	5,5	2,5	1,50
VCG390.301800	1/2"	67	350	1,8	VUBA 030	29	6	1,5	11,5	7	3	2,50
VCG390.402200	3/4"	169	350	2,2	VUBA 040	34	6	2,5	15,5	7	3	4,50
VCG390.502600	1"	223	350	2,6	VUBA 050	40	8,5	1,5	18,5	8	4	9,80

S = STANDARD OPENING - STANDARDÖFFNUNG

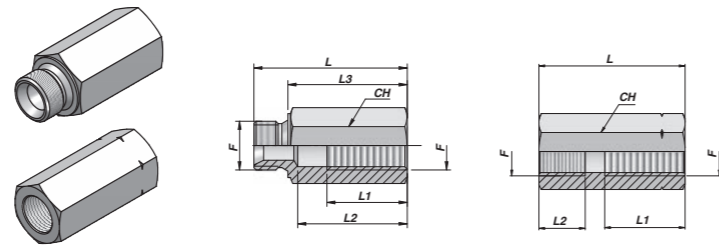
MATERIAL: STEEL - STAHL

CARTRIDGE
PATROE

LAPPED TIGHT SURFACES
GELÄPPTEN DICHTFLÄCHEN

GEHÄUSE FÜR "VUBA" VENTIL I "VUBA" VALVE ADAPTER

VCG391/VCG392

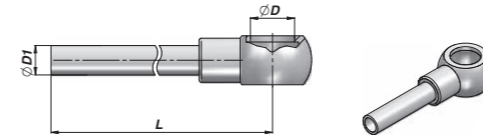


Code Bestell-Nr.	F BSP	P MAX Bar	Type Typ	L	L1	L2	L2	CH	kg x 100
MALE/FEMALE - AUSSEN/INNENGWINDE									
VCG391.100000	1/4"	300	CMFxVUBA-010	50	23	31	38	19	7,00
VCG391.200000	3/8"	300	CMFxVUBA-020	60	30	43	48	22	9,50
VCG391.300000	1/2"	300	CMFxVUBA-030	63	33	45	49	27	14,70
VCG391.400000	3/4"	300	CMFxVUBA-040	75	36	50	59	32	22,50
VCG391.500000	1"	250	CMFxVUBA-050	88	46	60	70	41	42,50
MALE/FEMALE - AUSSEN/INNENGWINDE									
VCG392.100000	1/4"	300	CFFxVUBA-010	50	20	12	-	19	7,00
VCG392.200000	3/8"	300	CFFxVUBA-020	58	27	14	-	22	9,80
VCG392.300000	1/2"	300	CFFxVUBA-030	60	33	19	-	27	14,50
VCG392.400000	3/4"	300	CFFxVUBA-040	76	36	19	-	32	22,20
VCG392.500000	1"	250	CFFxVUBA-050	85	46	18	-	41	43,50

MATERIAL: STEEL - STAHL

FOR A COMPLETE RANGE OF VALVES AND FITTINGS PLEASE SEE CATALOGUE «B».
FÜR DIE KOMPLETTE PALETTE VON VENTILEN UND VERSCHRAUBUNGEN BITTE KATALOG «B» SEHEN.

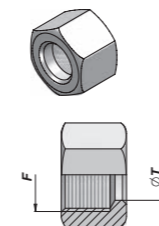
RV535



Code Bestell-Nr.	ØD BSP	L	ØD1	Max Bar	kgx100
RV535.0410	1/4"	100	10	300	5,50
RV535.0415	1/4"	150	10	300	7,00
RV535.0420	1/4"	200	10	300	8,50
RV535.0430	1/4"	300	10	300	11,50
RV535.0440	1/4"	400	10	300	14,50
RV535.0460	1/4"	600	10	300	20,50
RV535.0485	1/4"	800	10	300	28,00
RV535.0499	1/4"	1000	10	300	34,50
RV535.120404	1/4"	40	12	300	3,60
RV535.120475	1/4"	75	12	300	5,20
RV535.120410	1/4"	100	12	300	6,10
RV535.120420	1/4"	200	12	300	10,70
RV535.120440	1/4"	400	12	300	18,50
RV535.120460	1/4"	600	12	300	25,50
RV535.0603	3/8"	40	12	300	4,50
RV535.0606	3/8"	60	12	300	5,80
RV535.0607	3/8"	75	12	300	6,40
RV535.0610	3/8"	100	12	300	7,00
RV535.0615	3/8"	150	12	300	8,50
RV535.0620	3/8"	200	12	300	11,00
RV535.0630	3/8"	300	12	300	14,50
RV535.0640	3/8"	400	12	300	18,50
RV535.0650	3/8"	500	12	300	22,50
RV535.0660	3/8"	600	12	300	27,00
RV535.0699	3/8"	1000	12	300	42,50
RV535.0810	1/2"	100	15	300	11,50
RV535.0820	1/2"	200	15	300	16,50
RV535.0830	1/2"	300	15	300	20,50
RV535.0840	1/2"	400	15	300	26,50

TN81 ÜBERWURFMUTTERN I TN81 NUT

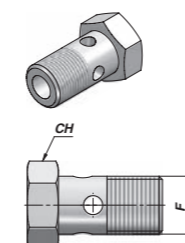
RD081IDIN 2353



Code Bestell-Nr.	Type Typ	ØT	F	kg x 100
RD08110L00	TN 81 10 L	10	M16x1,5	2,10
RD08112L00	TN 81 12 L	12	M18x1,5	2,40
RD08115L00	TN 81 15 L	15	M22x1,5	3,90

HOHLSCHRAUBE FÜR RINGANSCHLUSS I BOLT FOR BANJO

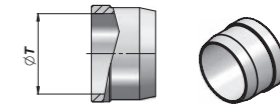
RV431



Code Bestell-Nr.	F BSP	CH	kg x 100
RV431.0400	1/4"	19	3,00
RV431.0600	3/8"	22	5,80
RV431.0800	1/2"	27	8,80

TN88 SCHNEIDERIND I TN88 CUTTING RING

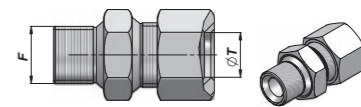
RD088IDIN 2353



Code Bestell-Nr.	Type Typ	ØT	kg x 100
RD08810L00	TN 88 10 LS	10	0,24
RD08812L00	TN 88 12 LS	12	0,31
RD08815L00	TN 88 15 L	15	0,41

TN92 BSPP VERSCHAUBUNG I TN92 BSPP FITTING

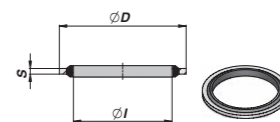
RD092IDIN 2353



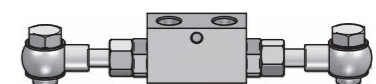
Code Bestell-Nr.	Type Typ	ØT	F BSP	kg x 100
RD09210LRO	TN 92 10 LR	10	1/4"	4,70
RD09212LRO	TN 92 12 LR	12	3/8"	6,50
RD09215LRO	TN 92 15 LR	15	1/2"	11,50

BONDED DICHTUNG I BONDED SEAL

GAB



Code Bestell-Nr.	Thread Gewinde BSP	ØI	ØD	S	kg x 100
GAB1300000	1/4"	13,74	20,57	2,03	0,20
GAB1700000	3/8"	17,28	23,80	2,03	0,20
GAB2100000	3/8"	21,54	28,58	2,49	0,30



DICHTSÄTZE FÜR KOLBENSTANGENFÜHRUNG "CGT" I SEAL KITS FOR "CGT" HEAD BUSH

GKGCCTIM250

Code Bestell-Nr.	Rod Kolbenstange	O-Ring Dowty	GHK	TTI-L TTS TSE	O-Ring Dowty	AGI x2
GKGT020030	20	120	078110	TTI 20-28/L	025	-
GKGT025035	25	123	098129	TTI 25-33/L	123	-
GKGT030040	30	126	118149	TTI 30-38/L	126	-
GKGT035045	35	129	137169	TTS 596	129	-
GKGT040050	40	132	157188	TTI 40-48/L	132	-
GKGT045055	45	136	177208	TTI 45-55/2L	136	-
GKGT050060	50	138	196228	TTI 50-60/L	138	-
GKGT060070	60	145	236267	TSE 275236	145	-
GKGT070000	70	237	275322	TSE 334275/1	-	76x 70x12,8
GKGT080000	80	239	314346	TSE 377314/AI	-	86x 80x12,8
GKGT100000	100	248	393440	TSE 444393/AI	-	106x 100x12,80

DICHTSÄTZE FÜR KOLBENSTANGENFÜHRUNG "CGHFRT" I SEAL KITS FOR "CGHFRT" HEAD BUSH

GKGFHRTM250

Code Bestell-Nr.	Rod Kolbenstange	GHK	TTI-L TTS TSE	O-Ring 90 Sh. Dowty	AGI x2
GKGFHRT020	20	078110	TTI 20-28/L	123	-
GKGFHRT025	25	098129	TTI 25-33/L	123	-
GKGFHRT030	30	118149	TTI 30-38/L	129	-
GKGFHRT035	35	137169	TTI 35-43	129	-
GKGFHRT040	40	157188	TTI 40-48/L	136	-
GKGFHRT045	45	177208	TTS 634	136	-
GKGFHRT050	50	196228	TTI 50-60/L	142	-
GKGFHRT060	60	236267	TTI 60-70/L	149	-
GKGFHRT070	70	275307	TTI 70-80	235	76x 70x12,8
GKGFHRT080	80	314346	TTI 80-90	238	86x 80x12,8
GKGFHRT090	90	354401	TTI 90-105/2	242	96x 90x12,8
GKGFHRT100	100	393440	TTI 100-113/1	245	106x 100x12,80

DICHTSÄTZE FÜR KOLBEN "CTLM" I SEAL KITS FOR "CTLM" PISTON

GKGCTLMIC200

Code Bestell-Nr.	Bore/Hole Kolben-Ø/Bohrung	TPS/G	O-Ring Dowty
GKGCTLM040015	40/15	157125/1	616
GKGCTLM050021	50/21	196157	812
GKGCTLM060025	60/25	236188	120
GKGCTLM070025	70/25	275228	120
GKGCTLM080028	80/28	314255	216
GKGCTLM100035	100/35	393334	220

DICHTSÄTZE FÜR KOLBEN "CTPM" I SEAL KITS FOR "CTPM" PISTON

GKGCTPMIP350

Code Bestell-Nr.	Bore/Hole Kolben-Ø/Bohrung	APE x2	PDH	O-Ring Dowty
GKGCTPM050021	50/21	50x 45x5,6	50-40	812
GKGCTPM060030	60/30	60x 55x5,6	60-50	217
GKGCTPM070040	70/40	70x 65x9,7	70-55	129
GKGCTPM080040	80/40	80x 75x9,7	80-65	129
GKGCTPM090038	90/38	90x 85x9,7	90-75	128
GKGCTPM100045	100/45	100x 95x9,7	100-85	133
GKGCTPM110050	110/50	100x 105x9,7	110-95	830
GKGCTPM120050	120/50	120x 115x9,7	120-105	830
GKGCTPM125050	125/50	125x 120x9,7	125-102	831
GKGCTPM140050	140/50	140x 135x9,7	140-117	830
GKGCTPM150056	150/56	150x 145x9,7	150-127	834
GKGCTPM160056	160/56	160x 155x9,7	160-137	834

DICHTSÄTZE FÜR KOLBENSTANGENFÜHRUNG "CGLM" SEAL KITS FOR "CGLM" HEAD BUSH

GKGCGLMIC200



Code Bestell-Nr.	Bore/Rod Kolben-Ø/Kolbenstange	O-Ring Dowty	GHK	TTI-L TTS TSE	O-Ring Dowty
GKGCGLM040020	40/20	129	078110	TTI 20-28/L	219
GKGCGLM040025	40/25	129	098129	TTI 25-33/L	219
GKGCGLM050025	50/25	135	098129	TTI 25-33/L	826
GKGCGLM050030	50/30	135	118149	TTI 30-40/1L	826
GKGCGLM060030	60/30	142	118149	TTI 30-40/1L	832
GKGCGLM060035	60/35	142	137169	TTI 35-45/L	832
GKGCGLM070035	70/35	148	137169	TTI 35-45/L	839
GKGCGLM070040	70/40	148	157188	TTI 40-50/3L	839
GKGCGLM080040	80/40	151	157188	TTI 40-50/3L	845
GKGCGLM080050	80/50	151	196228	TTI 50-60/L	845
GKGCGLM100050	100/50	241	196228	TTI 50-60/L	621
GKGCGLM100060	100/60	241	236267	TTI 283236	621

DICHTSÄTZE FÜR KOLBENSTANGENFÜHRUNG "CGPM" I SEAL KITS FOR "CGPM" HEAD BUSH

GKGCGLMIP350

160120Code Bestell-Nr.	Bore/Rod Kolben-Ø/Kolbenstange	AFI	GHM/C	O-Ring Dowty	GIR	GKS	O-Ring Dowty	TTX
GKGCGLM050025	50/25	n°3 25x 30x5,7	35x 25x7/10	826	-	826	135	1301 -BR
GKGCGLM050030	50/30	n°3 30x 35x5,7	40x 30x7/10	826	-	826	135	1303 -BR
GKGCGLM050035	50/35	n°3 35x 40x5,6	45x 35x7/10	826	-	826	135	1305 -BR
GKGCGLM060030	60/30	n°2 30x 35x5,7 n°1 30x35x9,7	40x30x7/10	832	-	832	142	1303 -BR
GKGCGLM060035	60/35	n°2 35x 40x5,6 n°1 35x 40x9,7	45x 35x7/10	832	-	832	142	1305 -BR
GKGCGLM060040	60/40	n°2 40x 45x5,7 n°1 40x 45x9,7	50x 40x7/10	832	-	832	142	1308 -BR
GKGCGLM070040	70/40	n°2 40x 45x9,7	50x 40x7/10	839	0400	839	148	1307/1 -BR
GKGCGLM080045	80/45	n°2 45x 50x9,7	55x 40x7/10	845	0450	845	151	1309 -BR
GKGCGLM080050	80/50	n°2 50x 55x9,7	60x 50x7/10	845	0500	845	151	1310 -BR
GKGCGLM090045	90/45	n°2 45x 50x9,7	55x 45x7/10	620	0450	620	153	1309 -BR
GKGCGLM090050	90/50	n°2 50x 55x9,7	60x 50x7/10	620	0500	620	153	1310 -BR
GKGCGLM090060	90/60	n°2 60x 65x9,7	70x 60x7/10	620	0600	620	153	1314/2 -BR
GKGCGLM100045	100/45	n°2 45x 50x9,7	55x 45x7/10	621	0450	621	154	1309 -BR
GKGCGLM100050	100/50	n°2 50x 55x9,7	60x 50x7/10	621	0500	621	154	1310 -BR
GKGCGLM100060	100/60	n°2 60x 65x9,7	70x 60x7/10	621	0600	621	154	1314/2 -BR
GKGCGLM110050	110/50	n°2 50x 55x9,7	60x 50x7/10	345	0500	345	156	1310 -BR
GKGCGLM110060	110/60	n°2 60x 65x9,7	70x 60x7/10	345	0600	345	156	1314/2 -BR
GKGCGLM120060	120/60	n°2 60x 65x9,7	70x 60x7/10	348	0600	348	158	1314/2 -BR
GKGCGLM120070	120/70	n°2 70x 75x9,7	80x 70x7/10	348	0700	348	158	1322 -BR
GKGCGLM120080	120/80	n°2 80x 85x9,7	80x 90x7/10	348	0800	348	158	1331 -BR
GKGCGLM125070	125/70	n°3 70x 75x9,7	80x 70x7/10	349	0700	349	249	1322 -BR
GKGCGLM125080	125/80	n°3 80x 85x9,7	90x 80x7/10	349	0800	349	249	1331 -BR
GKGCGLM140080	140/80	n°3 80x 85x9,7	90x 80x7/10	864	0800	864	254	1331 -BR
GKGCGLM140090	140/90	n°3 90x 95x9,7	100x 90x7/10	864	0900	864	254	1337 -BR
GKGCGLM140100	140/100	n°3 100x 105x9,7	110x 100x7/10	864	1000	864	254	1341/1 -BR
GKGCGLM150080	150/80	n°3 80x 85x9,7	90x 80x7/10	867	0800	867	257	1331 -BR
GKGCGLM150090	150/90	n°3 90x 95x9,7	100x 90x7/10	867	0900	867	257	1337 -BR
GKGCGLM150100	150/100	n°3 100x 105x9,7	110x 100x7/10	867	1000	867	257	1341/1 -BR
GKGCGLM160100	160/100	n°3 100x 105x9,7	110x 100x7/10	870	1000	870	259	1341/1 -BR
GKGCGLM160120	160/120	n°3 120x 125x9,7	130x 120x7/10	870	1200	870	259	1348 -BR

DICHTSÄTZE FÜR KOLBEN "CTF" | SEAL KITS FOR "CTF" PISTON

GKGFIM250

Code Bestell-Nr.	Bore/Threa Kolben-Ø/Gewinde	TPM	O-Ring Dowty
GKGF025010	25/10	TPS/G 098066	806
GKGF040016	40/16	157118	017
GKGF050020	50/20	196133	812
GKGF060024	60/24	236173	120
GKGF063024	63/24	248185	120
GKGF070024	70/24	275196	120
GKGF080027	80/27	314236	216
GKGF090033	90/33	354275	220
GKGF100033	100/33	393295	220
GKGF110039	110/39	433334	825
GKGF120042	120/42	472374	827
GKGF125042	125/42	492393	827
GKGF140048	140/48	551452	831
GKGF150048	150/48	590492	831
GKGF160052	160/52	629531	833

DICHTSÄTZE FÜR KOLBENSTANGENFÜHRUNG "CGHFR" | SEAL KITS FOR "CGHFR" HEAD BUSH

GKGBIM250

Code Bestell-Nr.	Bore/Threa Kolben-Ø/Gewinde	TPS/G	O-Ring Dowty
GKGB040016	40/16	157125/1	017
GKGB050020	50/20	196157	812
GKGB060024	60/24	236188	120
GKGB063024	63/24	248200	120
GKGB070024	70/24	275228	120
GKGB080027	80/27	314255	216
GKGB100033	100/33	393334	220

DICHTSÄTZE FÜR KOLBEN "CTLM" | SEAL KITS FOR "CTLM" PISTON

GKGCTFGIM250

Code Bestell-Nr.	Bore/Threa Kolben-Ø/Gewinde	AGE	GER	O-Ring Dowty
GKGCTFG040016	40/16	40x 36x9,7	0400	017
GKGCTFG050016	50/16	50x 44x9,7	0500	017
GKGCTFG060024	60/24	60x 54x12,8	0600	120
GKGCTFG070024	70/24	70x 64x12,8	0700	120
GKGCTFG080027	80/27	80x 74x12,8	0800	216
GKGCTFG100033	100/33	100x 94x12,8	1000	220

DICHTSÄTZE FÜR KOLBEN "CTPM" | SEAL KITS FOR "CTPM" PISTON

GKGCTIM250

Code Bestell-Nr.	Bore/Threa Kolben-Ø/Gewinde	AGE x2
GKGCTT03012	30/12	30x 26x9,6
GKGCTT03514	35/14	35x 31x9,6
GKGCTT04014	40/14	40x 36x9,6
GKGCTT04516	45/16	45x 41x9,6
GKGCTT05020	50/20	50x 44x9,6
GKGCTT05520	55/20	55x 49x12,8
GKGCTT06020	60/20	60x 54x12,8
GKGCTT07024	70/24	70x 64x12,8
GKGCTT08027	80/27	80x 74x12,8
GKGCTT08527	85/27	85x 79x12,8
GKGCTT09033	90/33	90x 84x12,9
GKGCTT10033	100/33	100x 94x12,8
GKGCTT11039	110/39	110x 104x12,8
GKGCTT12039	120/39	120x 114x12,8

DICHTSÄTZE FÜR KOLBENSTANGENFÜHRUNG "CGIN" | SEAL KITS FOR "CGIN" HEAD BUSH



GKGGP

Code Bestell-Nr.	Bore/Threa Kolben-Ø/Gewinde	O-Ring Dowty	GHK	TTI-L TTS TSE	O-Ring Dowty
GKGGP1120034	1"1/2 - 3/4"	-	3/4"	TTI 19,50-25,40	219
GKGGP2000118	2" - 1"1/8	137	1"1/8	TTI 28,57-36,50	828
GKGGP2120118	2"1/2 - 1"1/8	145	1"1/8	TTI 28,57-36,50	835
GKGGP2120114	2"1/2 - 1"1/4	145	1"1/4	TTI 31,75-41,27	835
GKGGP2120112	2"1/2 - 1"1/2	145	1"1/2	TTI 38,10-47,62	835
GKGGP3000112	3" - 1"1/2	151	1"1/2	TTI 38,10-47,62	843
GKGGP3000134	3" - 1"3/4	151	1"3/4	TTI 44,45-53,97	843
GKGGP3120134	3"1/2 - 1"3/4	238	1"3/4	TTI 44,45-53,97	236
GKGGP3120200	3"1/2 - 2"	238	2"	TTI 50,80-60,32	236
GKGGP4000200	4" - 2"	242	2"	TTI 50,80-60,32	342
GKGGP4000212	4" - 2"1/2	242	2"1/2	TTI 63,50-76,20	342
GKGGP5000212	5" - 2"1/2	250	2"1/2	TTI 63,80-76,20	860
GKGGP5000234	5" - 2"3/4	250	2"3/4	TTI 69,80-82,50	860
GKGGP5000300	5" - 3"	250	3"	TTI 76,20-88,90	860
GKGGP6000300	6" - 3"	258	3"	TTI 76,20-88,90	868
GKGGP6000312	6" - 3"1/2	258	3"1/2	TTI 88,90-101,60	868

DICHTSÄTZE FÜR KOLBENSTANGENFÜHRUNG "CTIN" | SEAL KITS FOR "CTIN" HEAD BUSH

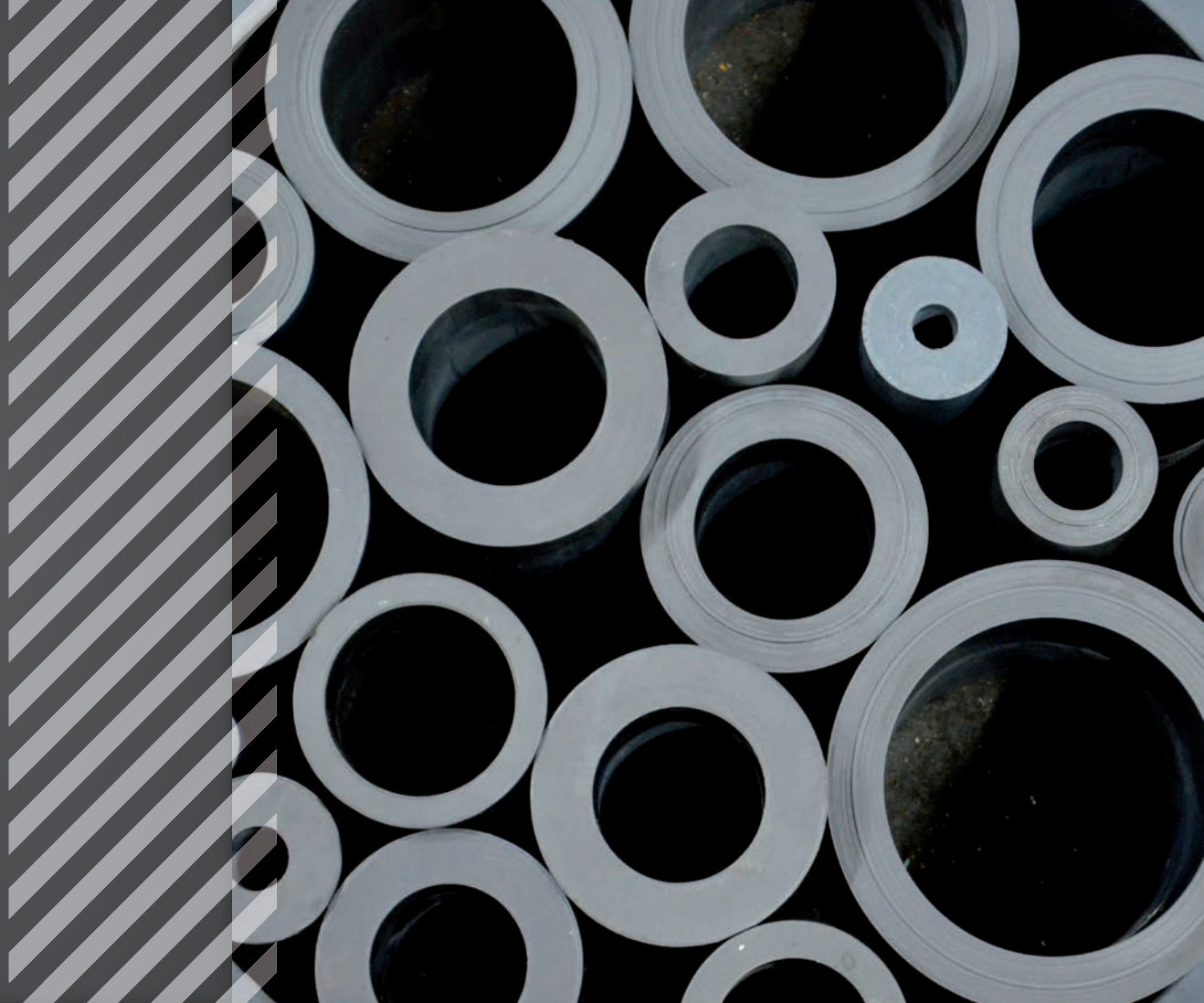
GKGTTP

Code Bestell-Nr.	Bore/Threa Kolben-Ø/Gewinde	TPM/P	O-Ring Dowty
GKGTTP112M160	1"1/2 - 0.630	1500-1125	114
GKGTTP200M200	2" - 0.787	2000-1375	117
GKGTTP212M200	2"1/2 - 0.787	2500-1875	117
GKGTTP212M230	2"1/2 - 0.906	2500-1875	213
GKGTTP300M300	3" - 1.181	3000-2250	217
GKGTTP312M330	3"1/2 - 1.299	3500-2750	219
GKGTTP400M330	4" - 1.299	4000-3250	219
GKGTTP500M400	5" - 1.575	5000-4000	824
GKGTTP600M520	6" - 2.047	6000-5000	832

DICHTSÄTZE FÜR KOLBENSTANGENFÜHRUNG "CGXX" | SEAL KITS FOR "CGXX" HEAD BUSH

GKGCXX

Code Bestell-Nr.	Bore/Threa Kolben-Ø/Gewinde	AFI	GHK	O-Ring Dowty	TTI-L TTS TSE	O-Ring Dowty
GKGCXX040020	40/20	TEF-SEAL 03-6325	078110	126	TTI 20-28/L	219
GKGCXX040025	40/25	n°2 25x30x5,7	098129	126	TTI 25-33/L	219
GKGCXX050025	50/25	n°2 25x30x5,7	098129	132	TTI 25-35/L	826
GKGCXX050030	50/30	n°2 30x35x5,7	118149	132	TTI 30-40/1L	826
GKGCXX060030	60/30	n°2 30x35x9,7	118149	138	TTI 30-40/1L	832
GKGCXX060035	60/35	n°2 35x40x9,7	137169	138	TTI 35-45/L	832
GKGCXX060040	60/40	n°2 40x45x9,7	157188	138	TTI 40-48/L	832
GKGCXX070035	70/35	n°2 35x40x9,7	137169	145	TTI 35-45/L	839
GKGCXX070040	70/40	n°2 40x45x5,7	157188	145	TTI 40-50/3L	839
GKGCXX080040	80/40	n°2 40x45x9,7	157188	149	TTI 40-50/3L	GDS 845



WANKER HYDRAULIK GMBH

Swarovskistraße 35 | A-6130 Schwaz

Mobil: +43(0)676 3822009

Fax: +43(0)5242 63930

office@wanker-hydraulik.at

www.wanker-hydraulik.at