

# STR

## Tank immersed suction strainers



Flow rates to 900 l/min

## STR (Materials)

- 1 - Connection: Nylon
- 2 - Support tubes: Galvanised Steel
- 3 - Cap: Nylon
- 4 - Valve: Nylon - Steel

## Filtration

- M60 - 60 micron
- M90 - 90 micron
- M250 - 250 micron

## Bypass valves

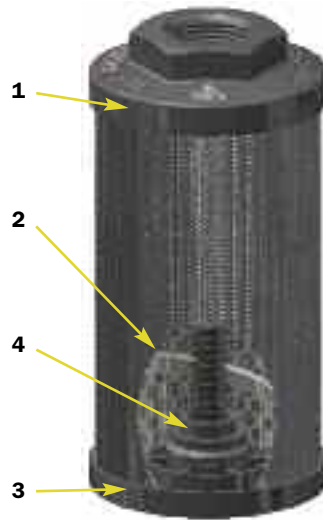
- Opening pressure:  
30 kPa  $\pm$  10%

## Temperature

- From -25°C to +110°C

Oil flow from exterior to interior.

STR with bypass



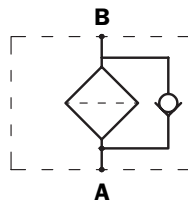
STR without bypass



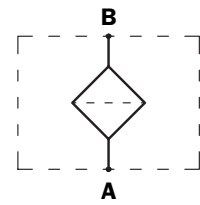
## Compatibility

- To ISO 2943; valid for mineral oils (type HH-HM-HR-HV-HG to ISO 6743/4) and synthetic fluids (type HS-HFDR-HFDS-HFDU to ISO 6743/4).
- For aqueous emulsions (type HFAE-HFAS to ISO 6743/4) and other fluids different from those indicated, contact Engineering - Sales Department.

Style B

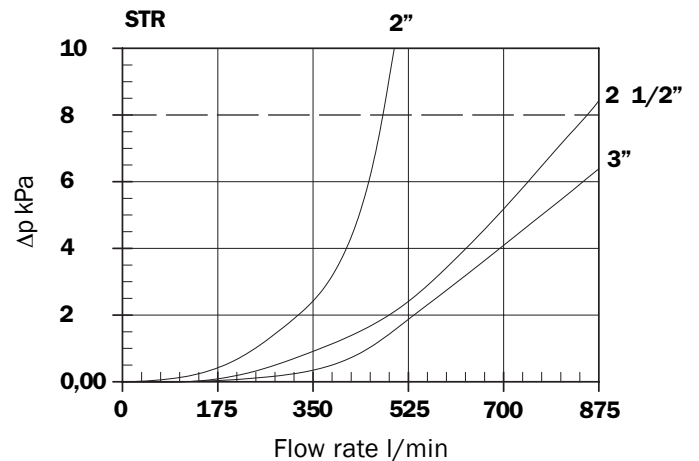
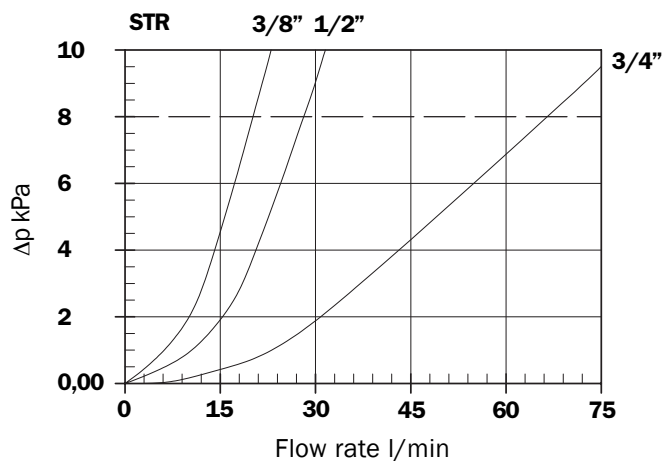
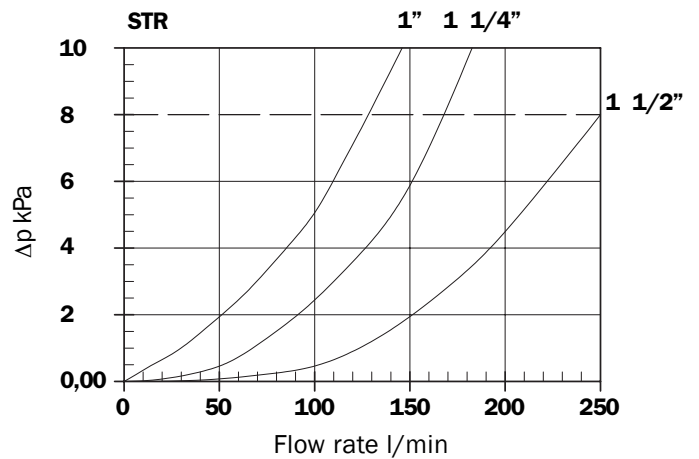


Style S

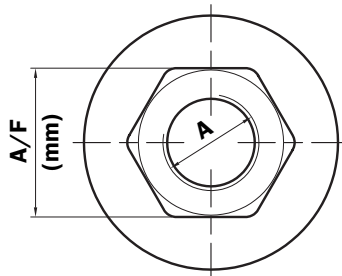
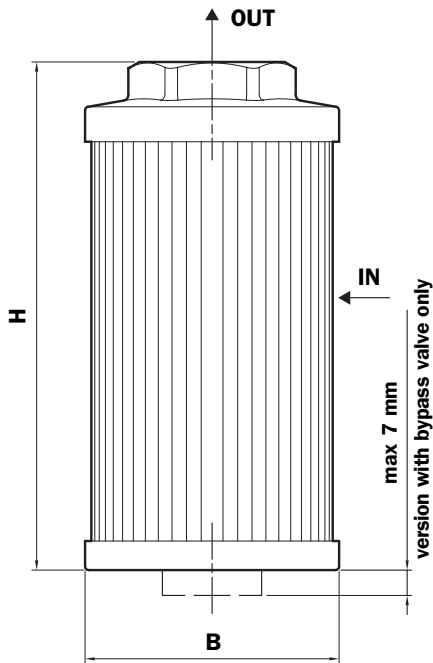


## Filter body $\Delta p$ pressure drop

The curves are plotted using mineral oil reference viscosity 30 mm<sup>2</sup>/s (cSt) to ISO 3968.



# Dimensions



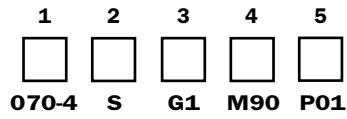
Size	A	B (mm)	H (mm)	A/F (mm)	Weight (kg)
045-1 G1	G 3/8"				0,15
045-1 G2	3/8" NPT	46	105		0,15
045-2 G1	G 1/2"				0,19
045-2 G2	1/2" NPT			30	0,19
050-1 G1	G 3/8"				0,11
050-1 G2	3/8" NPT	52	79		0,11
050-2 G1	G 1/2"				0,11
050-2 G2	1/2" NPT				0,11
065-1 G1	G 1/2"				0,19
065-1 G2	1/2" NPT		110		0,19
065-2 G1	G 3/4"				0,22
065-2 G2	3/4" NPT	65			0,22
065-3 G1	G 3/4"				0,24
065-3 G2	3/4" NPT		144		0,24
065-4 G1	G 1"				0,22
065-4 G2	1" NPT				0,22
070-1 G1	G 1/2"				0,18
070-1 G2	1/2" NPT		95	41	0,18
070-2 G1	G 3/4"				0,17
070-2 G2	3/4" NPT				0,17
070-3 G1	G 3/4"				0,23
070-3 G2	3/4" NPT	70			0,23
070-4 G1	G 1"				0,22
070-4 G2	1" NPT		141		0,22
070-6 G1	G 1/2"				0,24
070-6 G2	1/2" NPT				0,24
086-1 G1	G 1 1/2"				0,33
086-1 G2	1 1/2" NPT		143		0,33
086-2 G1	G 2"				0,30
086-2 G2	2" NPT				0,30
086-3 G1	G 1 1/2"				0,43
086-3 G2	1 1/2" NPT	86	201		0,43
086-4 G1	G 2"				0,40
086-4 G2	2" NPT				0,40
086-5 G1	G 1 1/2"				0,53
086-5 G2	1 1/2" NPT		261		0,53
086-6 G1	G 2"				0,50
086-6 G2	2" NPT				0,50
100-1 G1	G 1 1/4"		137	69	0,47
100-1 G2	1 1/4" NPT				0,47
100-2 G1	G 1 1/4"				0,58
100-2 G2	1 1/4" NPT				0,58
100-3 G1	G 1 1/2"				0,55
100-3 G2	1 1/2" NPT	99	227		0,55
100-4 G1	G 2"				0,51
100-4 G2	2" NPT				0,51
100-5 G1	G 1 1/2"				0,43
100-5 G2	1 1/2" NPT		137		0,43
140-1 G1	G 1 1/2"				0,70
140-1 G2	1 1/2" NPT		160		0,70
140-2 G1	G 2"				0,68
140-2 G2	2" NPT				0,68
140-3 G1	G 2"				0,94
140-3 G2	2" NPT	130	262		0,94
140-4 G1	G 2 1/2"				1,10
140-4 G2	2 1/2" NPT		272		1,10
140-5 G1	G 3"				1,0
140-5 G2	3" NPT			101	1,0
140-6 G1	G 3"				1,17
140-6 G2	3" NPT		330		1,17

# Ordering information

## Suction filter

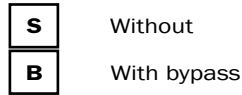
### STR

Example: STR

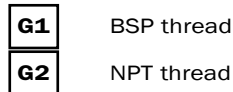


Box Qty	1 Part NO	Size
12	<b>045-1</b>	3/8"
12	<b>045-2</b>	1/2"
12	<b>050-1</b>	3/8"
12	<b>050-2</b>	1/2"
6	<b>065-1</b>	1/2"
6	<b>065-2</b>	3/4"
6	<b>065-3</b>	3/4"
6	<b>065-4</b>	1"
6	<b>070-1</b>	1/2"
6	<b>070-2</b>	3/4"
6	<b>070-3</b>	3/4"
6	<b>070-4</b>	1"
6	<b>070-6</b>	1/2"
6	<b>086-1</b>	1 1/2"
6	<b>086-2</b>	2"
6	<b>086-3</b>	1 1/2"
6	<b>086-4</b>	2"
6	<b>086-5</b>	1 1/2"
6	<b>086-6</b>	2"
6	<b>100-1</b>	1 1/4"
6	<b>100-2</b>	1 1/4"
6	<b>100-3</b>	1 1/2"
6	<b>100-4</b>	2"
6	<b>100-5</b>	1 1/2"
-	<b>140-1</b>	1 1/2"
-	<b>140-2</b>	2"
-	<b>140-3</b>	2"
-	<b>140-4</b>	2 1/2"
-	<b>140-5</b>	3"
-	<b>140-6</b>	3"

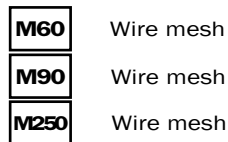
### 2 - Valve



### 3 - Connection



### 4 - Filter element



### 5 - Options

